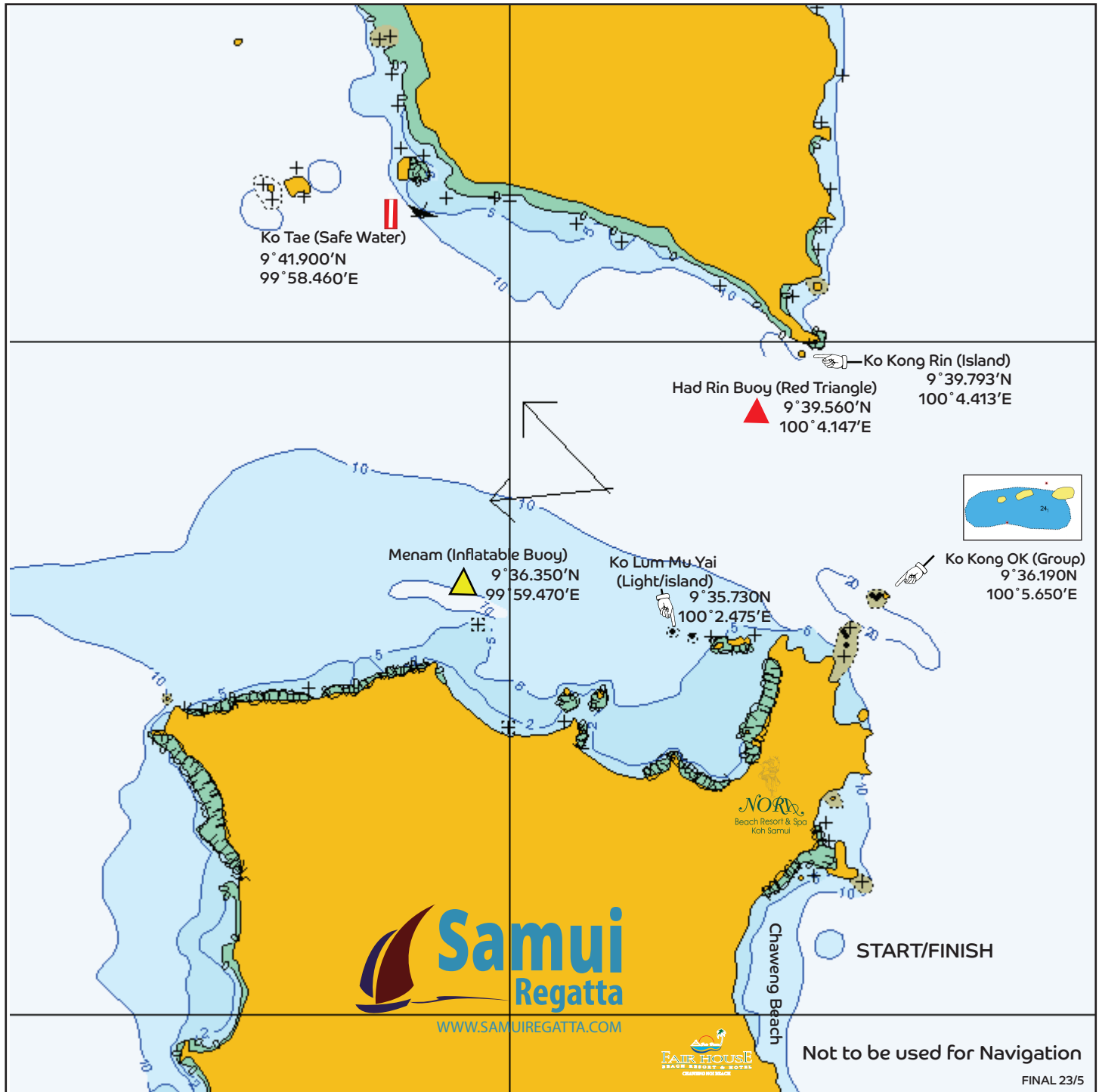


Samui Regatta 2025  
Mark Positions - North

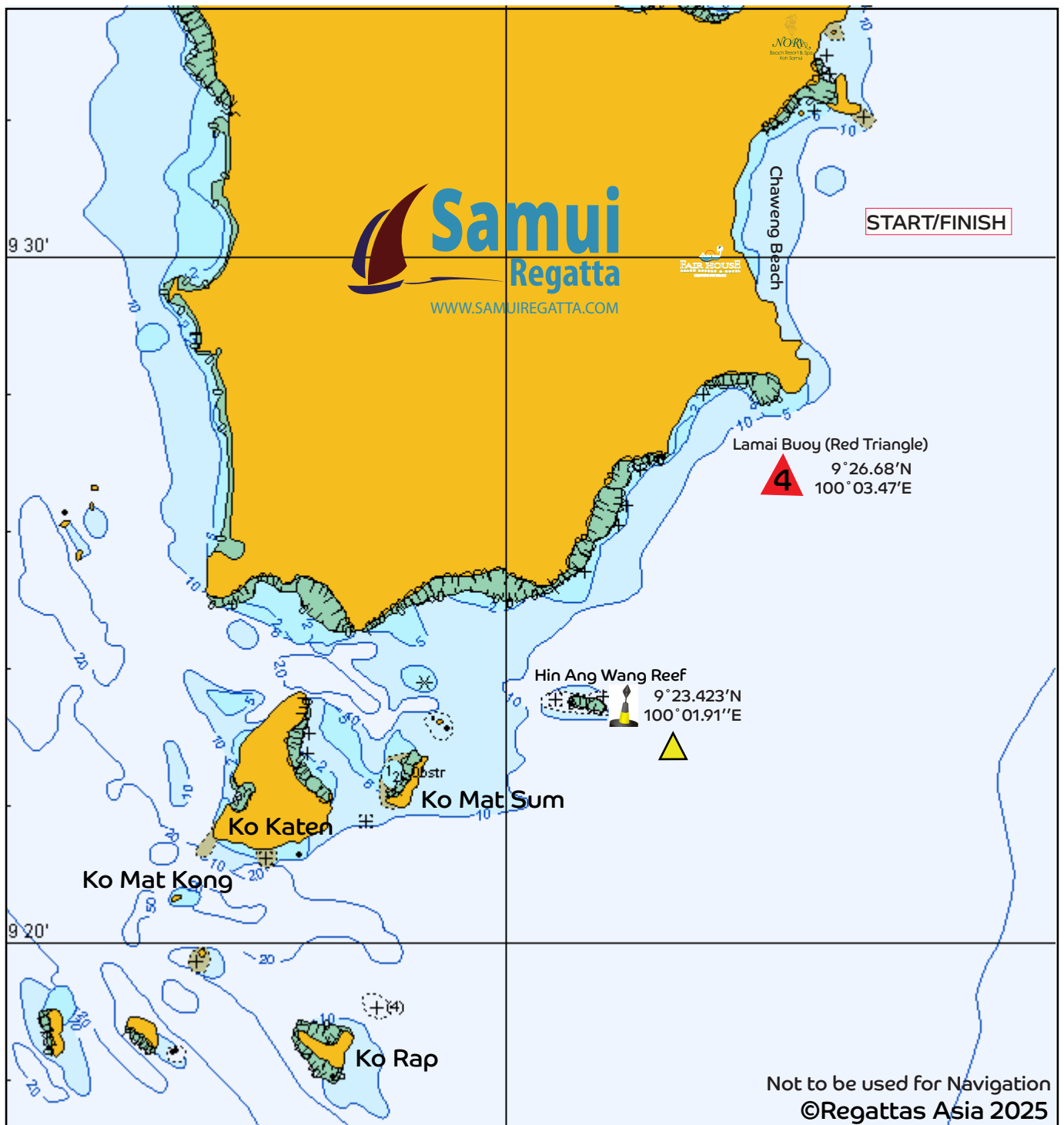


Coastal Courses  
Mark Positions - North

REGATTA HQ	9° 31.11'N	100° 03.58'E
Ko Kong Rin Island	9° 39.793'N	100° 04.413'E
Had Rin Buoy (Red/Orange)	9° 39.560'N	100° 04.147'E
Menam Mark	9° 36.350'N	99° 59.470'E
Ko Tae (Safe Water Mark)	9° 41.900'N	99° 58.460'E
Ko Lum Mu Yai (Outer Light)	9° 35.730'N	100° 02.475'E
Ko Kong OK Group (Outer Island)	9° 36.190'N	100° 05.650'E

Mark positions shown in the course diagrams are for illustration only.  
If there is any discrepancy between a course diagram and the written description, then the written description shall prevail.

Samui Regatta 2025  
South Course Mark Positions



Coastal Courses  
Mark Positions - South

MARK 4 - LAMAI 9° 26.68'N 100° 03.47'E

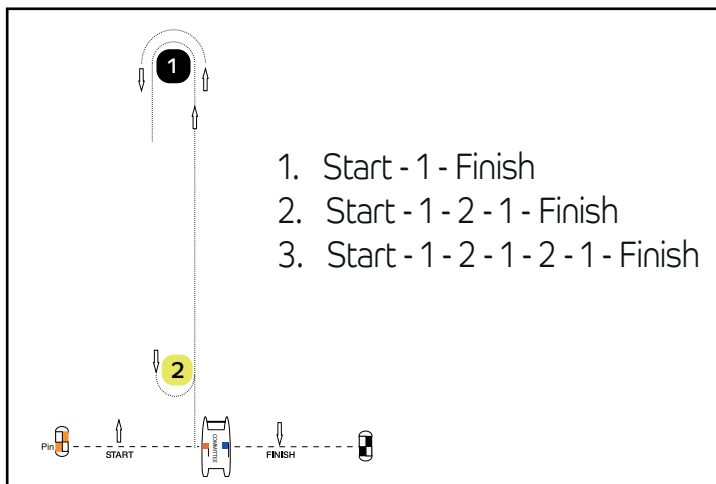
HIN ANG WANG REEF REEF EXTENDS at N9° 23.57 between  
100° 00.50'E and 100° 01.80 E  
YACHTS SHALL NOT PASS BETWEEN HIN ANG WANG REEF  
AND THE EAST CARDINAL MARK

HIN ANG WANG (Cardinal Mark) 9° 23.423'N 100° 01.91'E

Mark positions shown in the course diagrams are for illustration only.  
If there is any discrepancy between a course diagram and the written description,  
then the written description shall prevail.

# Courses 1 - 3 (Windward/Leeward)

All marks rounded to port



## South Courses:

NOTE SI 8.10 Adding a Windward Mark

### Course 10

Start  
Round Hin Ang Wang to Port  
Pass Through Gate (Cardinal Mark to Port)  
Finish

### Course 11

Start  
Round Mark 4 (Lamai) to Port  
Round Hin Ang Wang to Port  
Pass Through Gate (Cardinal Mark to Port)  
Finish

### Course 12

Start  
Round W/L Mark 1 to Port  
Round Hin Ang Wang to Port  
Pass Through Gate (Cardinal Mark to Port)  
Round W/L Mark 1 to Port  
Finish

### Course 12B

Start  
Round Hin Ang Wang to Port  
Pass Through Gate (Cardinal Mark to Port)  
Round Mark 4 (Lamai) to Starboard  
Round W/L Mark 1 to Port  
Finish

## North Courses:

NOTE SI 8.10 Adding a Windward Mark

### Course 4

Start  
Round Ko Kong OK Group to Port  
Finish

### Course 5

Start  
Pass Ko Kong OK (Group) to Port  
Round Had Rin (Red) Buoy to Port  
Pass Ko Kong OK to Port  
Finish

### Course 6

Start  
Pass Ko Kong OK (Group) to Port  
Round Had Rin (Red) Buoy to Port  
Round Menam (Inflatable) Buoy to Port  
Round Ko Kong OK (Group) to Starboard  
Finish

### Course 7

Start  
Pass Ko Kong OK (Group) to Port  
Round Ko Tae (Safe Water) Mark to Port  
Round Ko Kong OK (Group) to Starboard  
Finish

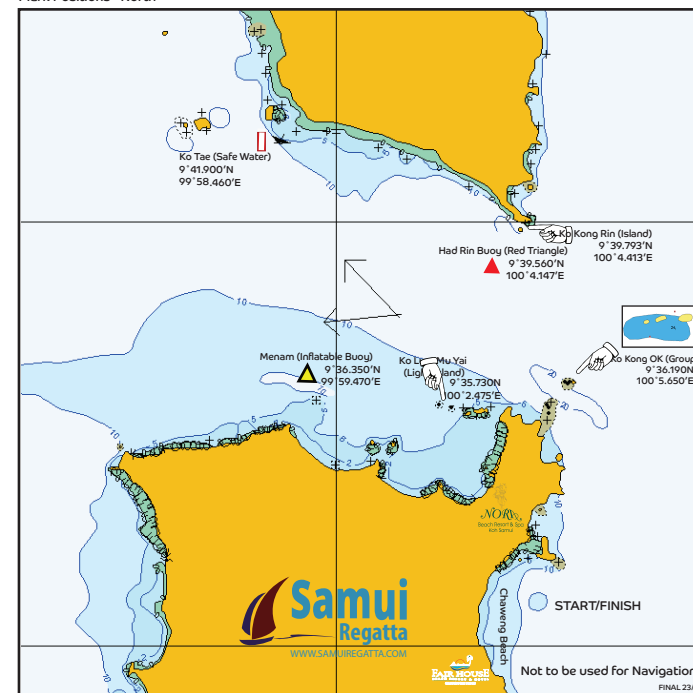
### Course 8

Start  
Pass Ko Kong OK (Group) to Port  
Round Ko Tae (Safe Water) Mark to Port  
Round Menam (Inflatable) Buoy to Port  
Round Ko Kong OK (Group) to Starboard  
Finish

### Course 9

Pass Ko Kong OK (Group) to Port  
Round Ko Tae (Safe Water) Mark to Port  
Round Had Rin (Red) Buoy to Starboard  
Pass Ko Kong OK to Starboard  
Finish

Samui Regatta 2025  
Mark Positions - North



Samui Regatta 2025  
South Course Mark Positions

