



Course Book

Host Sponsor



Co-Sponsors



Race Schedule – Appendix 1

Maximum Number of Races per Class: 10

The first warning signal will be at 10:00 hrs on each racing day, unless the “Around the Island” Offshore Race is planned. See SI 6.7

Sunday 27th May - Practice Race

Time of first warning signal 13.00

Monday 28th May

Time of first warning signal 10.00

Tuesday 29th May

Time of first warning signal 10.00

Wednesday 30th May

Time of first warning signal 10.00

Thursday 31st May

Reserve Day

Friday 1st June

Time of first warning signal 10.00

Saturday 2nd June

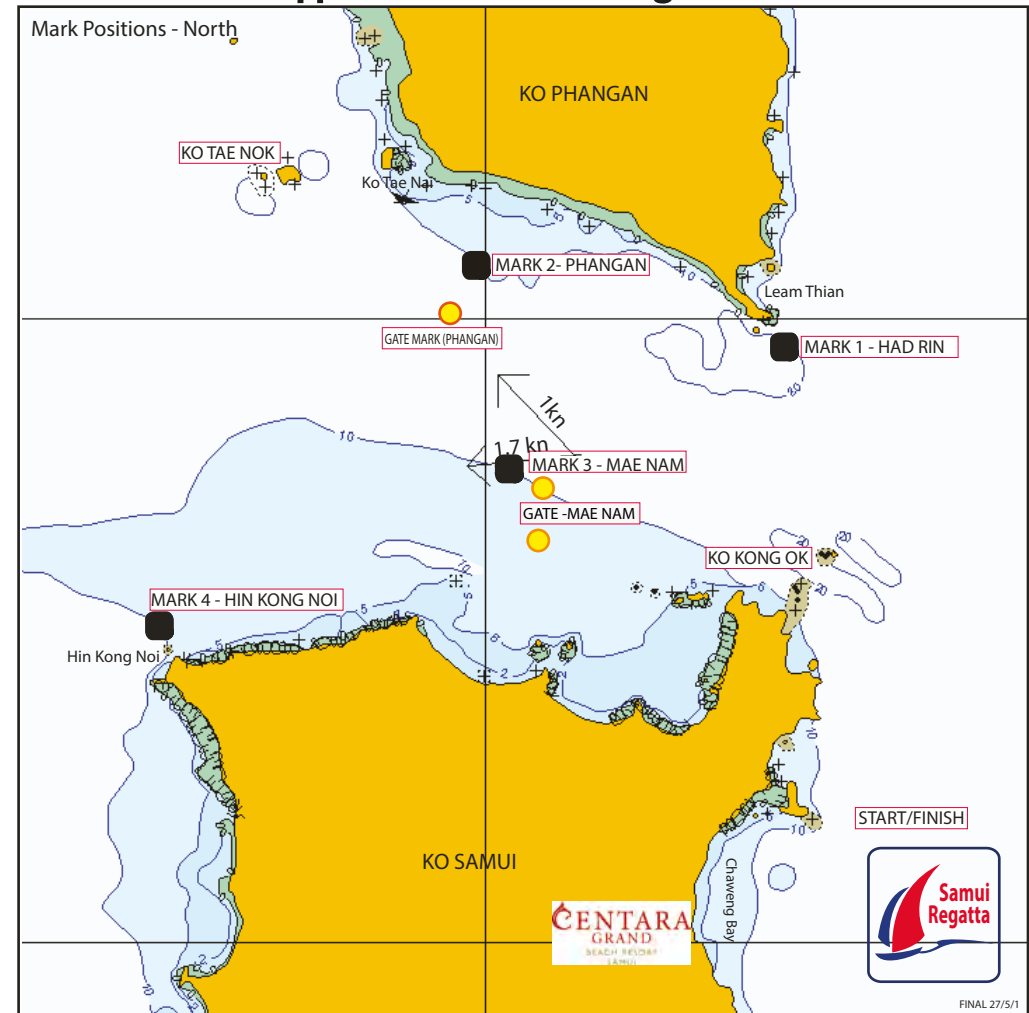
Time of first warning signal 10.00

When more than one race will be held on the same day, the warning signal for each succeeding race will be made as soon as practicable.

Organising Authorities



Appendix 2 - Course Diagrams



Coastal Courses

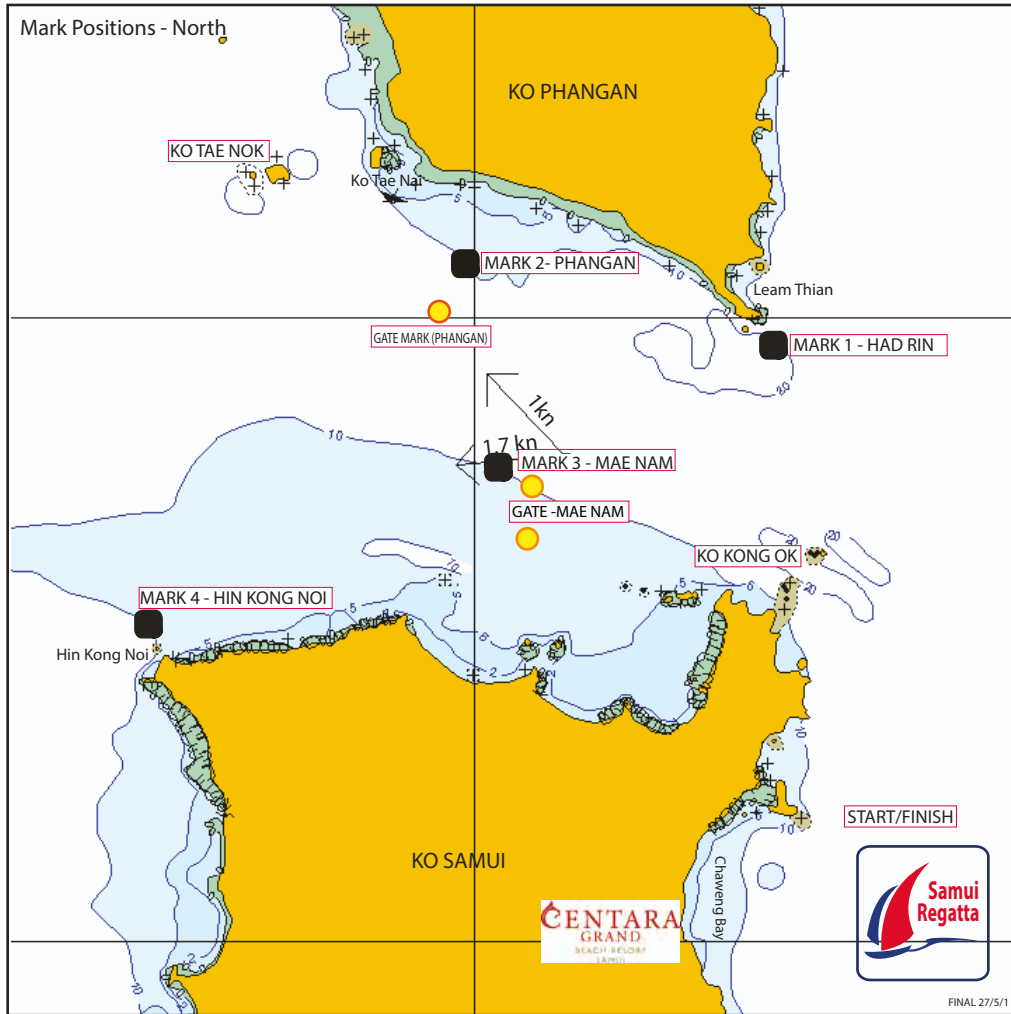
Mark Positions - North

REGATTA HQ (CENTARA GRAND BEACH RESORT)	N 9° 31.11	E100° 03.58
MARK 1 - HAD RIN	N 9° 39.28	E100° 04.83
MARK 2 - PHANGAN	N 9° 40.89	E100° 00.08
MARK 3 - MAE NAM	N 9° 37.50	E100° 00.55
MARK 4 - HIN KONG NOI	N 9° 34.94	E 99° 55.12
KO TAE NOK	N 9° 42.25	E 99° 56.45
KO KONG OK	N 9° 36.25	E100° 05.65

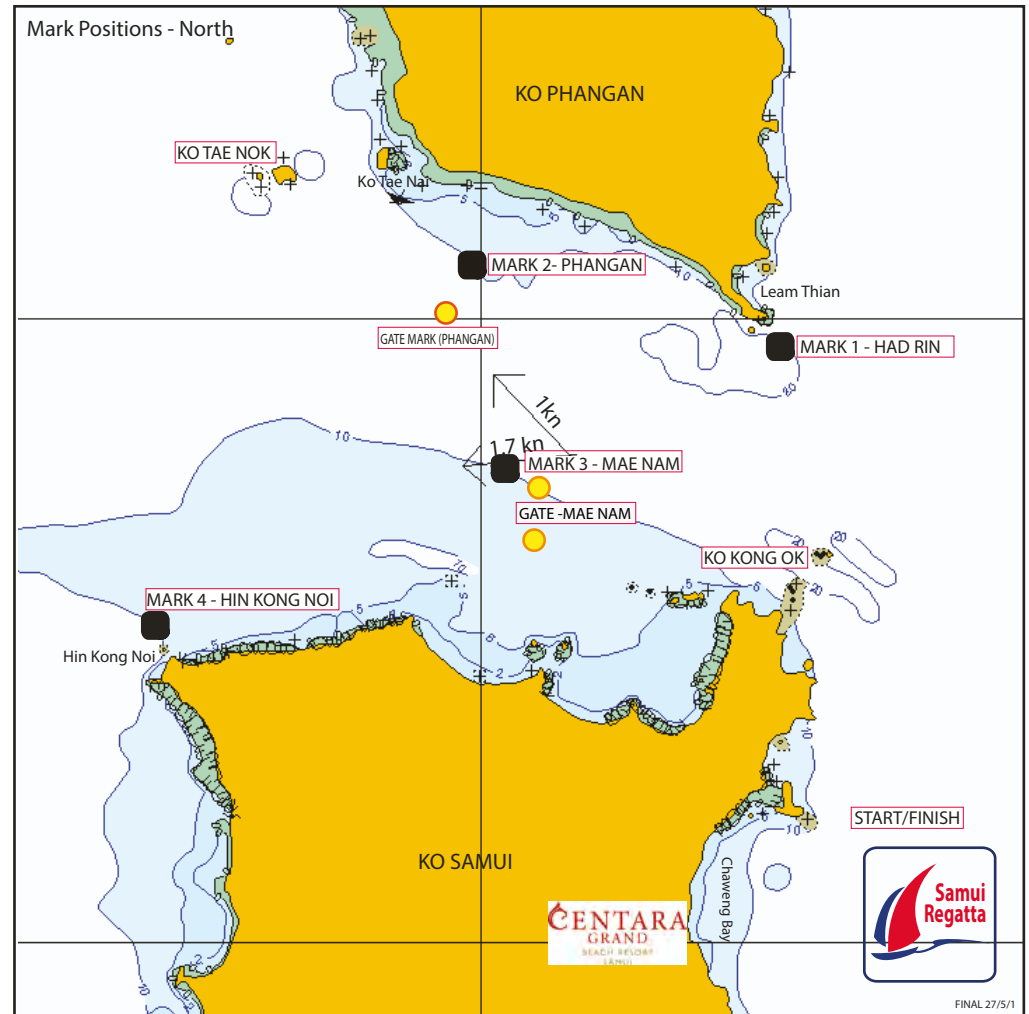
Mark positions shown in the course diagrams are for illustration only.

If there is any discrepancy between a course diagram and the written description, then the written description shall prevail.

North Courses 1,2,3



North Courses 4,5,6



Coastal Courses

COURSE 1

DISTANCE APPROX 22 NM

START
PASS **KO KONG OK** TO PORT
ROUND **MARK 1 - HAD RIN** TO PORT
ROUND **MARK 2 - PHANGAN** TO PORT
ROUND **KO KONG OK** TO STARBOARD
FINISH

COURSE 2

DISTANCE APPROX 32 NM

START
PASS **KO KONG OK** TO PORT
ROUND **MARK 1 - HAD RIN** TO PORT
PASS **MARK 2 - PHANGAN** TO PORT
ROUND **KO TAE NOK** TO PORT
THROUGH **GATE MARK 2 - PHANGAN**
ROUND **KO KONG OK** TO STARBOARD
FINISH

COURSE 3

DISTANCE APPROX 28 NM

START
PASS **KO KONG OK** TO PORT
ROUND **MARK 2 - PHANGAN** TO PORT,
ROUND **MARK 3 - MAE NAM** TO PORT
THROUGH **GATE - MAE NAM**
ROUND **KO KONG OK** TO STARBOARD
FINISH

Coastal Courses

COURSE 4

DISTANCE APPROX 36 NM

START
PASS **KO KONG OK** TO PORT
ROUND **MARK 2 - PHANGAN** TO PORT
ROUND **MARK 4 - HIN KONG NOI** TO PORT
THROUGH **GATE - MAE NAM**
ROUND **KO KONG OK** TO STARBOARD
FINISH

COURSE 5

DISTANCE APPROX 26 NM

START
PASS **KO KONG OK** TO PORT
ROUND **MARK 1 - HAD RIN** TO PORT
ROUND **MARK 3 - MAE NAM** TO PORT
THROUGH **GATE - MAE NAM**
ROUND **KO KONG OK** TO STARBOARD
FINISH

COURSE 6

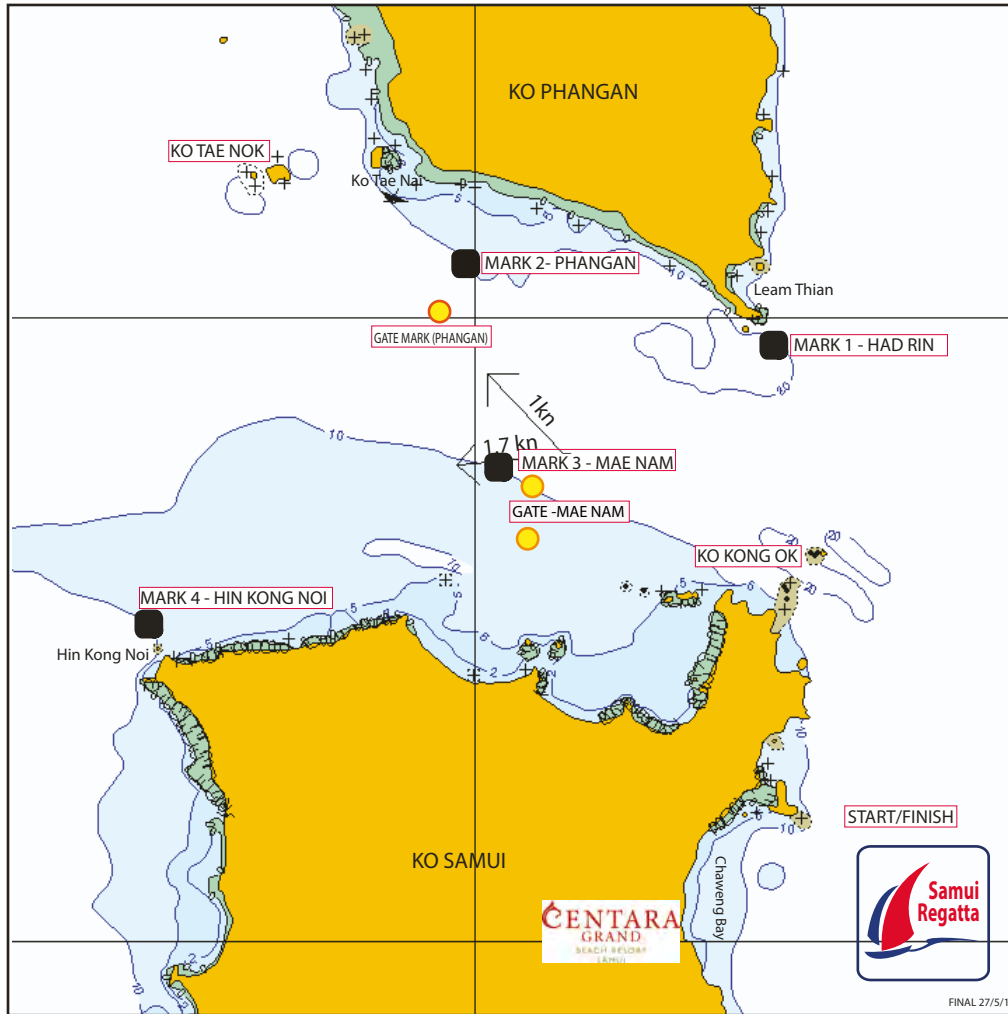
DISTANCE APPROX 35 NM

START
PASS **KO KONG OK** TO PORT
ROUND **MARK 1 - HAD RIN** TO PORT
ROUND **MARK 4 - HIN KONG NOI** TO PORT
THROUGH **GATE - MAE NAM**
ROUND **KO KONG OK** TO STARBOARD
FINISH

Mark positions shown in the course diagrams are for illustration only.
If there is any discrepancy between a course diagram and the written description, then the written description shall prevail.

Mark positions shown in the course diagrams are for illustration only.
If there is any discrepancy between a course diagram and the written description, then the written description shall prevail.

North Courses 7,8



Coastal Courses

COURSE 7
DISTANCE APPROX 16 NM

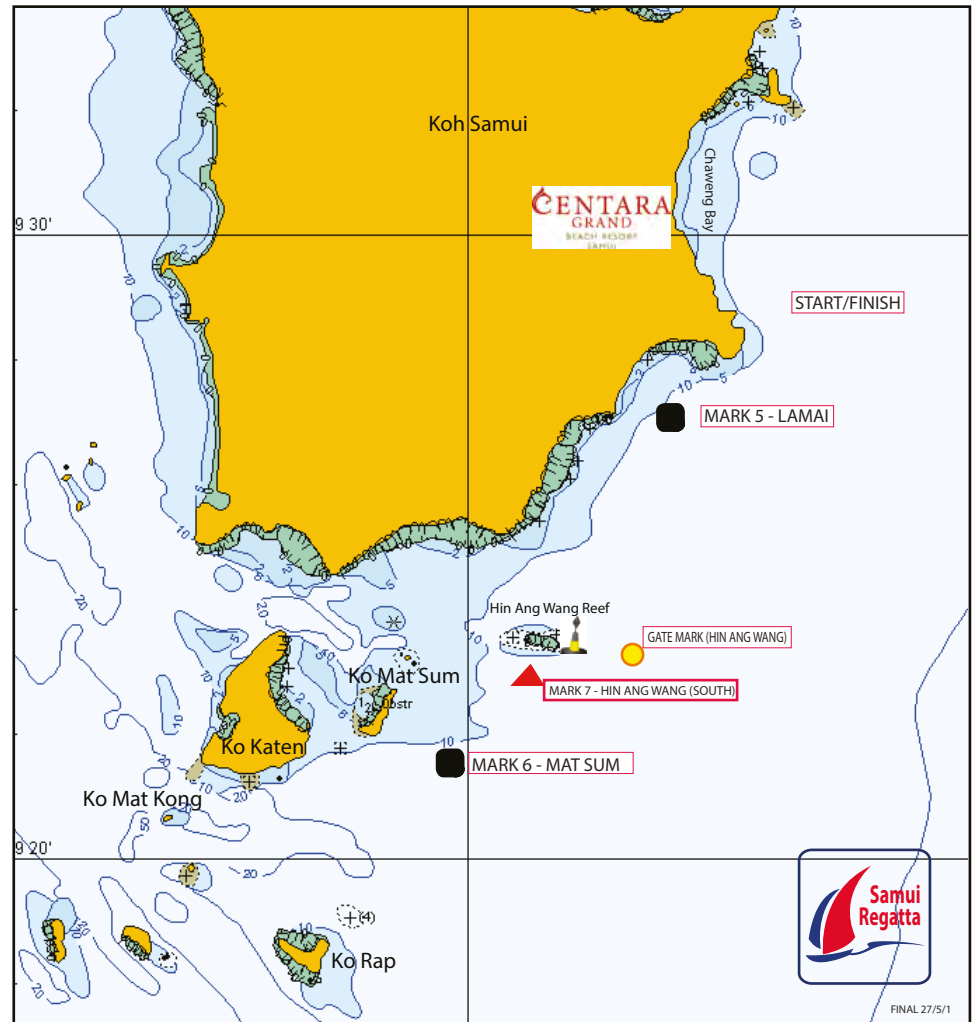
START
PASS **KO KONG OK** TO PORT
ROUND **MARK 3 - MAE NAM** TO PORT
THROUGH **GATE MAE NAM**
ROUND **KO KONG OK** TO STARBOARD
FINISH

COURSE 8
DISTANCE APPROX 17 NM

START
PASS **KO KONG OK** TO PORT
ROUND **MARK 1 - HAD RIN** TO PORT
PASS **KO KONG OK** TO STARBOARD
FINISH

Mark positions shown in the course diagrams are for illustration only.
If there is any discrepancy between a course diagram and the written description, then the written description shall prevail.

South Courses 9, 10, 11



Coastal Courses

COURSE 9
DISTANCE APPROX 22 NM

START
ROUND **MARK 5 - LAMAI** TO PORT
PASS **HIN ANG WANG REEF** TO PORT
ROUND **MARK 6 - MAT SUM** TO PORT
THROUGH **GATE HIN ANG WANG**
(Gate is between yellow/black
Cardinal Mark and Buoy)
FINISH

COURSE 10
DISTANCE APPROX 30 NM

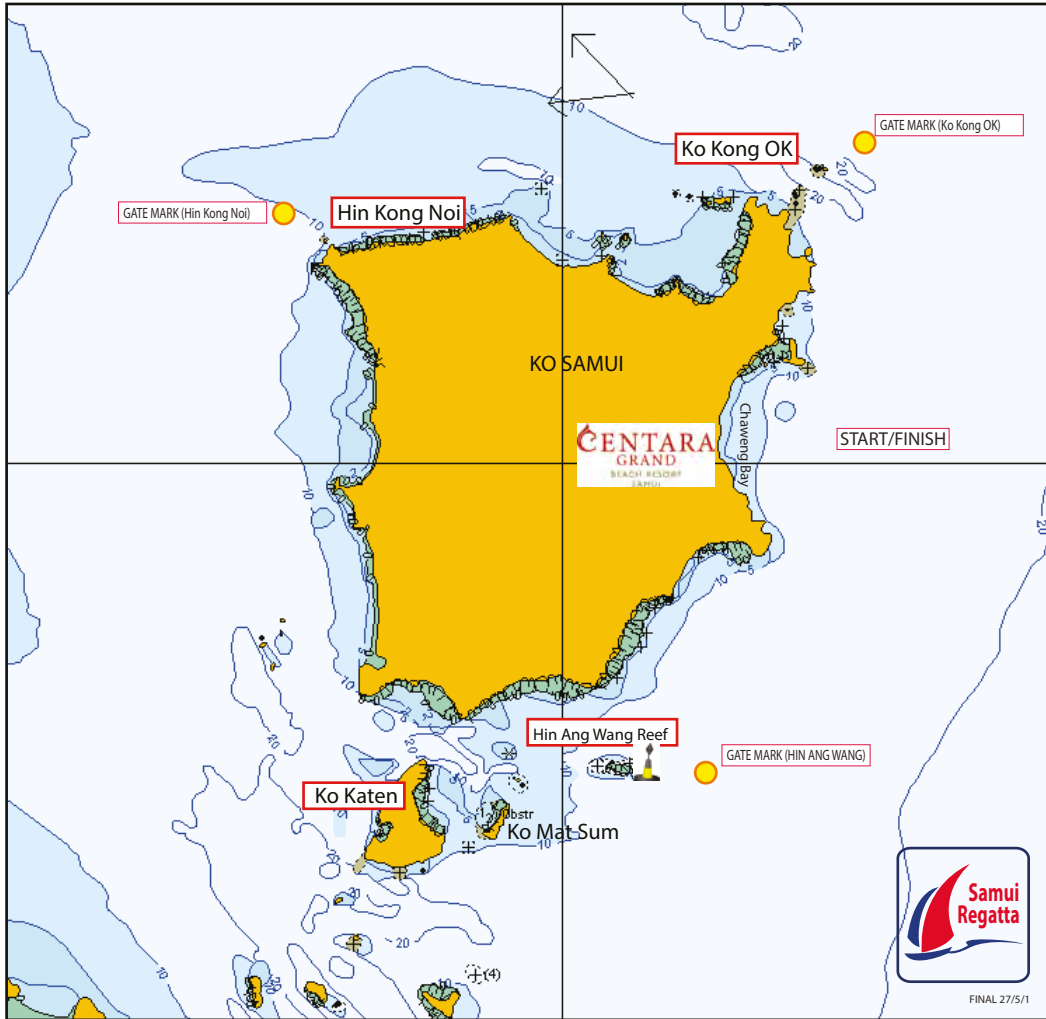
START
ROUND **MARK 5 - LAMAI** TO PORT
PASS **HIN ANG WANG REEF** TO PORT
PASS **MARK 6 - MAT SUM** TO PORT
ROUND **KO RAP** TO PORT
THROUGH **GATE HIN ANG WANG**
(Gate is between yellow/black
Cardinal Mark and Buoy)
FINISH

COURSE 11
DISTANCE APPROX 18 NM

START
ROUND **MARK 5 - LAMAI** TO PORT
PASS **HIN ANG WANG REEF** TO PORT
ROUND **MARK 7 - HIN ANG WANG (SOUTH)** TO PORT
PASS THROUGH **GATE HIN ANG WANG**
(Gate is between yellow/black
Cardinal Mark and Buoy)
FINISH

Mark positions shown in the course diagrams are for illustration only.
If there is any discrepancy between a course diagram and the written description, then the written description shall prevail.

“Round the Island” Courses 12, 12B, 14, 14B

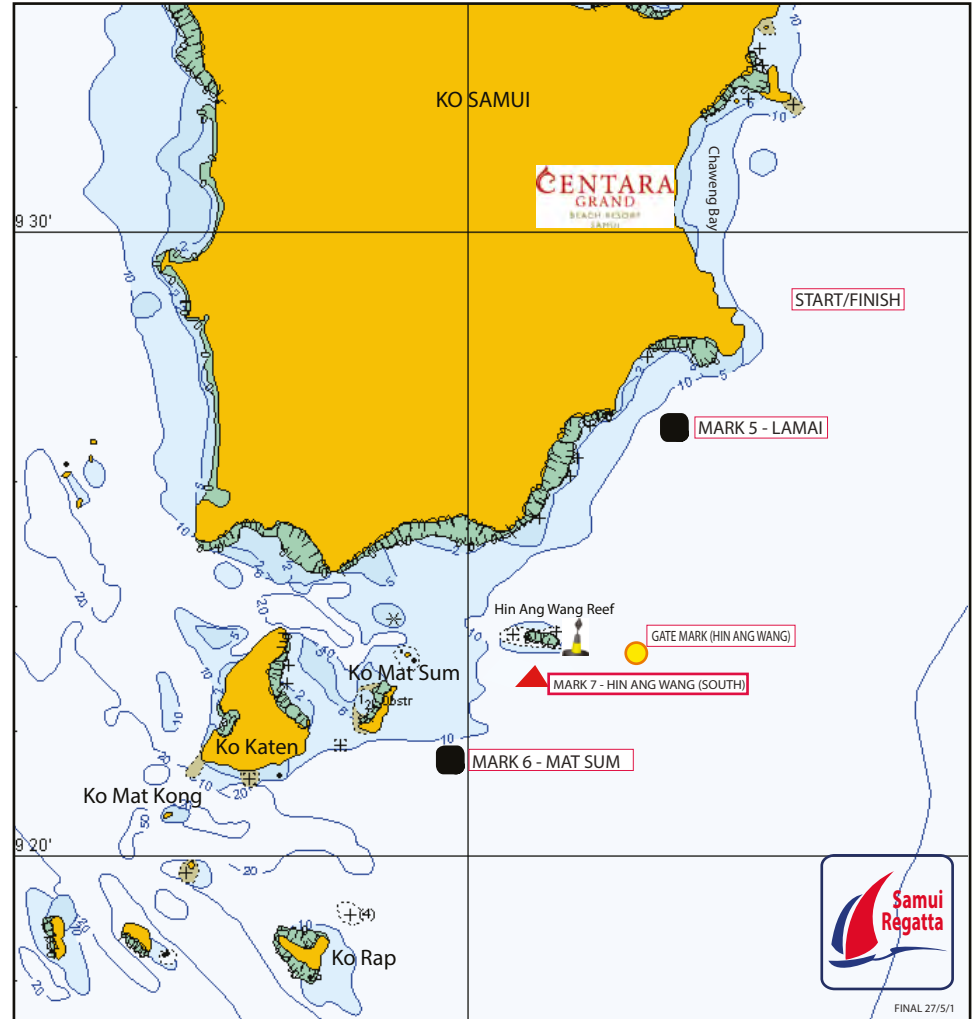


Offshore Courses – “Around the Island”

COURSE 12 DISTANCE APPROX 40 NM	COURSE 12B DISTANCE APPROX 40 NM	COURSE 14 DISTANCE APPROX 48 NM	COURSE 14 B DISTANCE APPROX 48 NM
START PASS HIN ANG WANG REEF TO PORT PASS KO KATEN TO PORT THROUGH GATE HIN KONG NOI (Gate is between HIN KONG NOI and Buoy) THROUGH GATE KO KONG OK (Gate is between KO KONG OK and Buoy) FINISH	START PASS KO KONG OK TO PORT THROUGH GATE HIN KONG NOI (Gate is between HIN KONG NOI and Buoy) PASS KO KATEN TO STARBOARD THROUGH GATE HIN ANG WANG (Gate is between yellow/black Cardinal Mark and Buoy) FINISH	START THROUGH GATE HIN ANG WANG (Gate is between yellow/black Cardinal Mark and Buoy) PASS KO KATEN TO STARBOARD THROUGH GATE HIN KONG NOI (Gate is between HIN KONG NOI and Buoy) THROUGH GATE KO KONG OK (Gate is between KO KONG OK and Buoy) FINISH	START PASS KO KONG OK TO PORT THROUGH GATE HIN KONG NOI (Gate is between HIN KONG NOI and Buoy) PASS KO KATEN TO PORT THROUGH GATE HIN ANG WANG (Gate is between yellow/black Cardinal Mark and Buoy) FINISH

Mark positions shown in the course diagrams are for illustration only.
If there is any discrepancy between a course diagram and the written description, then the written description shall prevail.

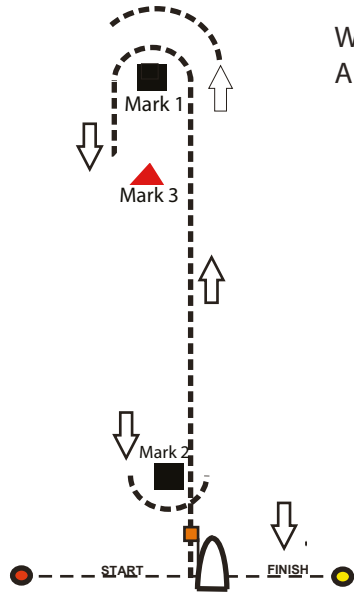
South Course Mark Positions



Coastal Courses
Mark Positions - South

MARK 5 - LAMAI	N9° 26.68	E 100° 03.47
HIN ANG WANG REEF	REEF EXTENDS at N9° 23.57 between E 100° 00.50 and E 100° 01.80 YACHTS SHALL NOT PASS BETWEEN HIN ANG WANG REEF AND THE EAST CARDINAL MARK	
HIN ANG WANG (Cardinal Mark)	N9° 23.44	E 100° 02.18
MARK 6 - MAT SUM	N9° 21.50	E 99° 59.40
MARK 7 - HIN ANG WANG (SOUTH)	N9° 23.00	E 100° 01.20

Mark positions shown in the course diagrams are for illustration only.
If there is any discrepancy between a course diagram and the written description, then the written description shall prevail.

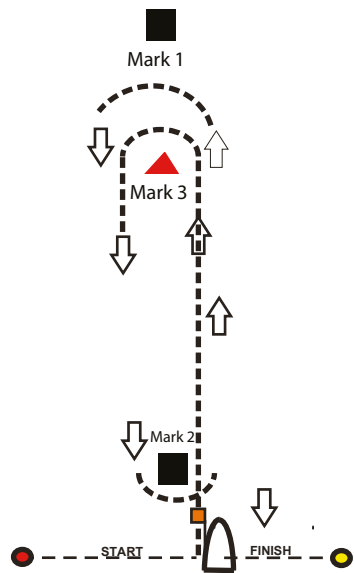


Windward/Leeward Courses
ALL MARK ROUNDINGS TO PORT

COURSE 15
START - 1 - Finish

COURSE 16
START - 1 - 2 - 1 - FINISH

COURSE 17
START - 1 - 2 - 1 - 2 - 1 - FINISH



COURSE 18
START - 3 - Finish

COURSE 19
START - 3 - 2 - 3 - FINISH

COURSE 20
START - 3 - 2 - 3 - 2 - 3 - FINISH

Mark positions shown in the course diagrams are for illustration only.
If there is any discrepancy between a course diagram and the written description, then the written description shall prevail.

Trapezoid Course

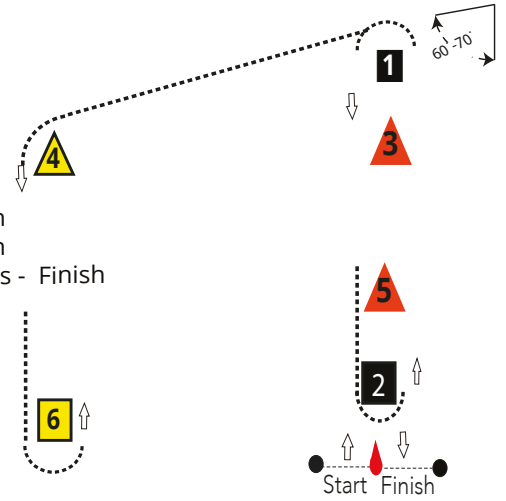
Direction of rounding:
p - Round to Port
s - Round to Starboard

Course: Inner Trapezoid

- I1 Start - 1p - 2p - 1p - 4p - 6p - 5s - Finish
- I2 Start - 3p - 2p - 3p - 4p - 6p - 5s - Finish
- I3 Start - 1p - 2p - 1p - 2p - 1p - 4p - 6p - 5s - Finish

Course: Outer Trapezoid

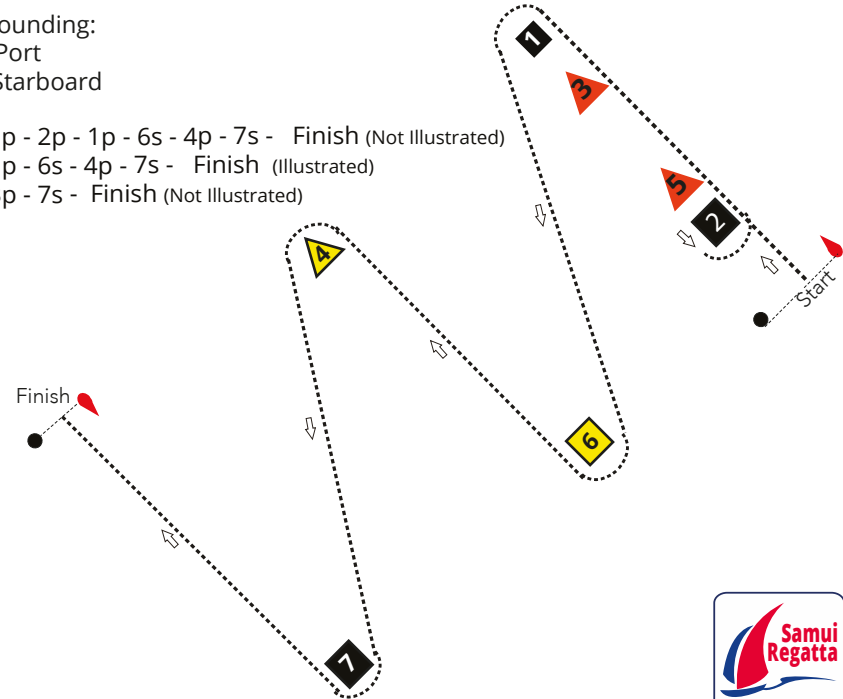
- O1 Start - 1p - 4p - 6p - 5s - Finish
- O2 Start - 3p - 4p - 6p - 5s - Finish
- O2 Start - 1p - 4p - 6p - 4p - 6p - 5s - Finish



ZigZag Courses

Direction of rounding:
p - Round to Port
s - Round to Starboard

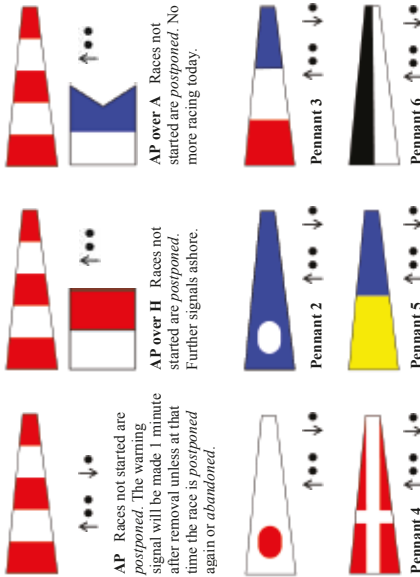
- Z1 Start - 1p - 2p - 1p - 6s - 4p - 7s - Finish (Not Illustrated)
- Z2 Start - 1p - 6s - 4p - 7s - Finish (Illustrated)
- Z3 Start - 3p - 7s - Finish (Not Illustrated)



RACE SIGNALS

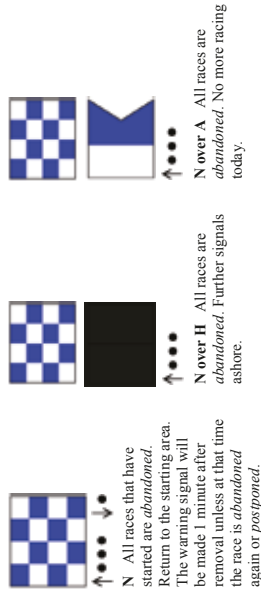
The meanings of visual and sound signals are stated below. An arrow pointing up or down (↑ ↓) means that a visual signal is displayed or removed. A dot (•) means a sound; five short dashes (-----) mean repetitive sounds; a long dash (—) means a long sound. When a visual signal is displayed over a class flag, the signal applies only to that class.

Postponement Signals

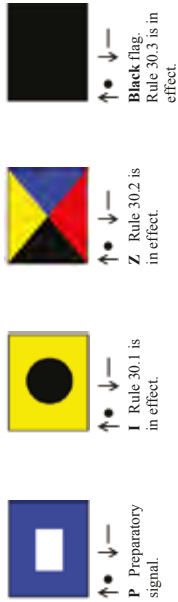


AP over a numeral pennant 1–6 Postponement of 1–6 hours from the scheduled starting time.

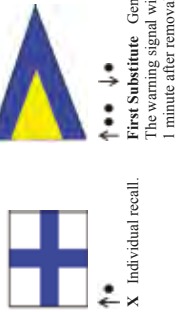
Abandonment Signals



Preparatory Signals



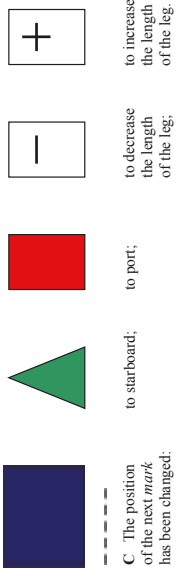
Recall Signals



Shortened Course



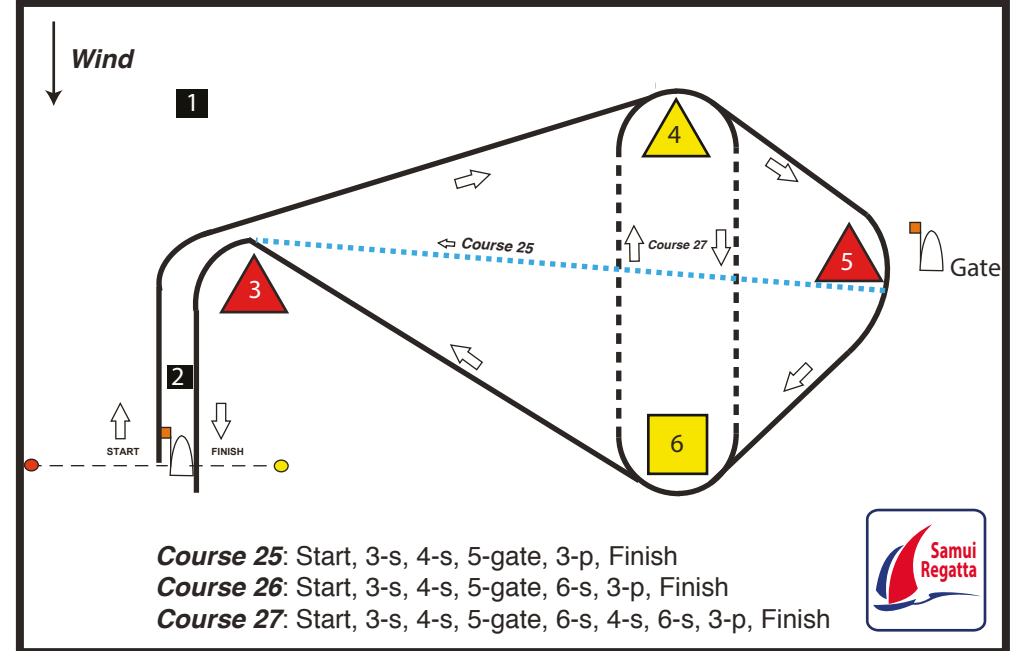
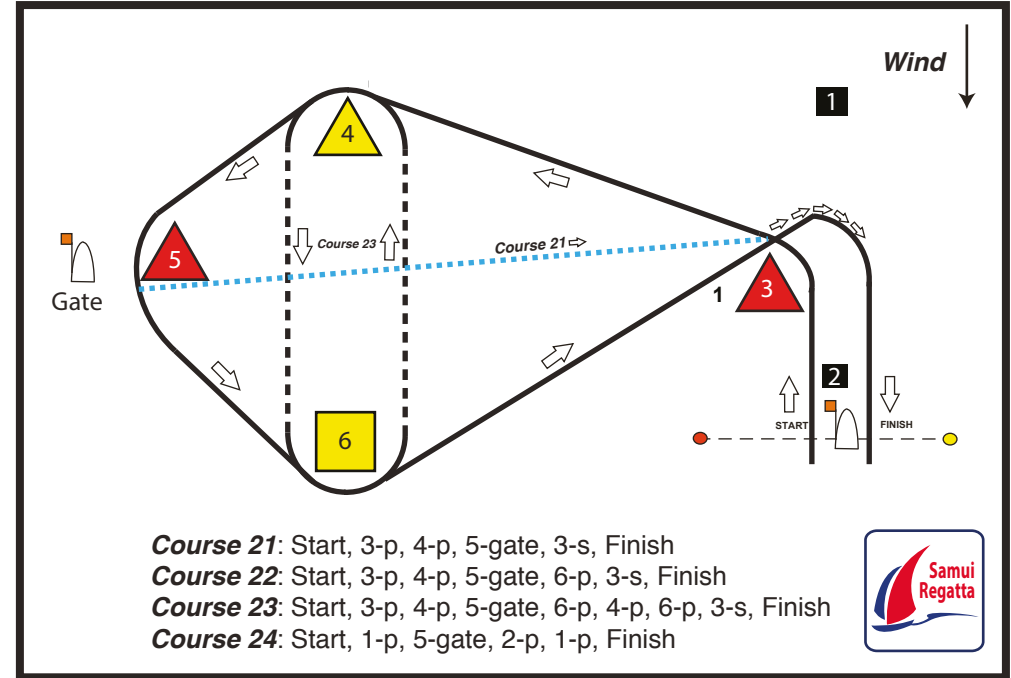
Changing the Next Leg



Other Signals



Coastal Courses 21 - 27

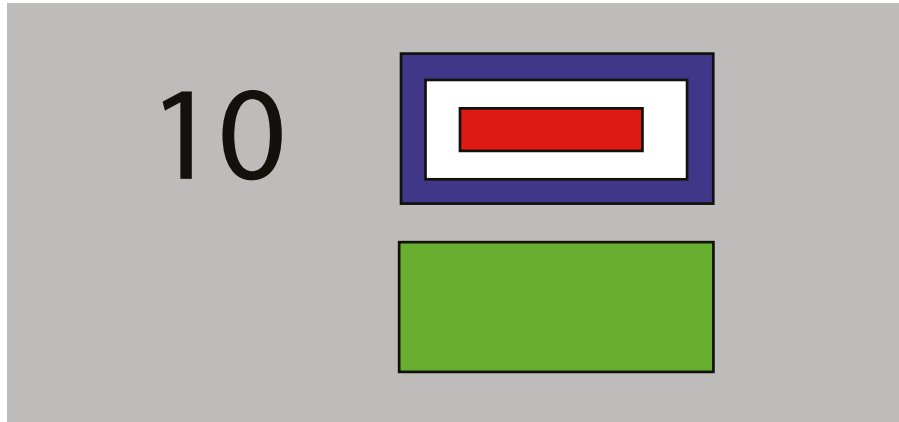


Mark positions shown in the course diagrams are for illustration only.
 If there is any discrepancy between a course diagram and the written description, then the written description shall prevail.



Adding a windward mark

If Flag W is displayed with the course number board, A new first mark will be added to the course. This will be a mark to windward of the starting line.



The Rounding direction is indicated by the Coloured Board displayed below the W. If a RED flag is displayed below flag W, then the mark is rounded to PORT. If a GREEN flag is displayed below flag W, then the mark is rounded to STARBOARD.

The second mark of the course will be the first mark in the course description. If a W flag is not flown, the first mark of the course will be the one listed in the course description. This section does not apply to windward/leeward courses. Those courses will be sailed as described in the Course Descriptions.

Return to Finish (Code Flag R)

A committee vessel, at a mark displaying a YELLOW Cross on a RED Background means complete the rounding or passing of the mark and the race direct to the finish line.



Host Sponsor



Co-Sponsors



Supporting Sponsors



Media Partners



facebook.com/samuiregatta
WWW.SAMUIREGATTA.COM



See you next year...
 25th May - 1st June 2019

Register Asia™, Samui Regatta™ and The Bay Regatta™ are registered trademarks of Fraser and Neave Co., Ltd pending trademark applications. Registered in Thailand.



Five days of professionally run, international yacht racing around the tropical island of Koh Samui, combined with five nights of beachside presentations and a stunning Gala Dinner at Centara Grand Beach Resort.

18th Koh Samui
REGATTA
 25th May - 1st June 2019
 Chaweng Beach, Koh Samui, Thailand

[facebook.com/samuiregatta](https://www.facebook.com/samuiregatta)
www.samuiregatta.com

[facebook.com/bayregatta](https://www.facebook.com/bayregatta)
www.bayregatta.com
 email: thebayregatta@regattas.asia



Join Thailand's "Fun" Regatta with 4-day racing, visiting 4-stunning destinations. All types of boats welcome, unique race courses, fantastic parties and daily prize giving.



The Bay Regatta 2019

13th - 17th February
 Phuket • Phang Nga • Krabi

เกาะสมุย (สุราษฎร์ธานี)
 Ko Samui (Surat Thani)

ละต (Lat) 09° 28' 47" น.(N)
 พ.ศ.๒๕๖๑

ลอง (Long) 99° 55' 40" อ.(E)
 YEAR 2018

เมษายน APRIL				พฤษภาคม MAY				มิถุนายน JUNE									
เวลา	สูง (ม.)	เวลา	สูง (ม.)	เวลา	สูง (ม.)	เวลา	สูง (ม.)	เวลา	สูง (ม.)	เวลา	สูง (ม.)						
TIME	HT (M.)	TIME	HT (M.)	TIME	HT (M.)	TIME	HT (M.)	TIME	HT (M.)	TIME	HT (M.)						
1	0506	1.49	16	0530	1.51	1	0726	1.32	16	0734	1.23	1	0025	2.34	16	0029	2.45
SU	1147	2.09	MO	1132	1.92	TU	1210	1.63	WE	1207	1.48	FR	0908	1.08	SA	1000	0.94
	1749	1.46		1706	1.46		1640	1.39		1551	1.33						
				2356	2.10					2358	2.38						
2	0018	2.03	17	0632	1.43	2	0013	2.32	17	0827	1.15	2	0100	2.33	17	0114	2.47
MO	0610	1.46	TU	1214	1.84	WE	0814	1.26	TH	1257	1.38	SA	0944	1.08	SU	1049	0.94
	1226	1.99		1715	1.45		1253	1.55		1615	1.29						
	1801	1.46					1658	1.39									
3	0047	2.15	18	0025	2.23	3	0045	2.37	18	0037	2.47	3	0134	2.31	18	0156	2.43
TU	0719	1.43	WE	0745	1.36	TH	0855	1.23	FR	0921	1.10	SU	1019	1.10	MO	1126	0.98
	1301	1.87		1256	1.73		1335	1.48		1347	1.30						
	1815	1.45		1730	1.43		1717	1.38		1636	1.25						
4	0118	2.25	19	0059	2.35	4	0118	2.39	19	0118	2.51	4	0207	2.28	19	0235	2.33
WE	0826	1.41	TH	0847	1.30	FR	0934	1.22	SA	1020	1.09	MO	1054	1.12	TU	1145	1.04
	1335	1.76		1337	1.61		1416	1.42									
	1830	1.43		1753	1.39		1731	1.37									
5	0150	2.31	20	0135	2.43	5	0152	2.38	20	0200	2.51	5	0235	2.22	20	0310	2.20
TH	0922	1.40	FR	0945	1.27	SA	1015	1.22	SU	1127	1.10	TU	1122	1.14	WE	1127	1.08
	1407	1.64		1417	1.49												
	1847	1.42		1813	1.36												
6	0223	2.34	21	0215	2.48	6	0226	2.35	21	0242	2.45	6	0259	2.14	21	0341	2.03
FR	1015	1.40	SA	1045	1.27	SU	1100	1.24	MO	1227	1.13	WE	1147	1.16	TH	1130	1.09
	1436	1.54		1454	1.39												
	1858	1.41		1811	1.32												
7	0257	2.33	22	0255	2.47	7	0257	2.30	22	0322	2.35	7	0320	2.05	22	0408	1.84
SA	1829	1.39	SU	1226	1.28	MO	1211	1.27	TU	1303	1.17	TH	1215	1.18	FR	1152	1.09
																1932	1.68
8	0331	2.30	23	0338	2.42	8	0324	2.23	23	0401	2.22	8	0345	1.93	23	0008	1.58
SU	1801	1.36	MO	1440	1.28	TU	1343	1.28	WE	1311	1.21	FR	1242	1.20	SA	0424	1.64
																1217	1.10
																2021	1.84
9	0407	2.25	24	0425	2.34	9	0353	2.14	24	0444	2.05	9	0410	1.79	24	1237	1.11
MO	1729	1.34	TU	1521	1.29	WE	1422	1.28	TH	1312	1.23	SA	1304	1.22	SU	2105	1.98
													2129	1.72			
10	0448	2.18	25	0520	2.22	10	0430	2.04	25	0536	1.87	10	1319	1.24	25	1253	1.12
TU	1719	1.33	WE	1523	1.32	TH	1445	1.29	FR	1335	1.24	SU	2134	1.86	MO	2145	2.08
										2103	1.78						
11	0548	2.12	26	0638	2.09	11	0531	1.93	26	0237	1.62	11	1334	1.25	26	0658	1.13
WE	1703	1.34	TH	1529	1.34	FR	1501	1.31	SA	0657	1.70	MO	2152	2.01	TU	1017	1.18
										1403	1.24					1315	1.13
										2137	1.94					2222	2.16
12	0731	2.06	27	0821	1.98	12	0724	1.82	27	0521	1.48	12	0634	1.27	27	0736	1.04
TH	1645	1.35	FR	1537	1.36	SA	1513	1.33	SU	0843	1.56	TU	1005	1.33	WE	2300	2.21
				2217	1.80		2235	1.84		1428	1.25		1352	1.23			
										2210	2.09		2223	2.16			
13	0906	2.04	28	0332	1.60	13	0422	1.61	28	0626	1.33	13	0717	1.13	28	0817	0.99
FR	1656	1.37	SA	0936	1.89	SU	0905	1.73	MO	1009	1.46	WE	1117	1.24	TH	2337	2.23
	2352	1.75		1552	1.37		1522	1.36		1446	1.26		1411	1.19			
				2244	1.97		2238	1.97		2243	2.20		2301	2.29			
14	0322	1.67	29	0456	1.50	14	0538	1.47	29	0713	1.22	14	0807	1.03	29	0858	0.97
SA	1003	2.02	SU	1034	1.81	MO	1021	1.66	TU	1113	1.39	TH	2344	2.39	FR		
	1701	1.40		1609	1.38		1527	1.37		1502	1.27						
	2330	1.84		2313	2.12		2255	2.11		2315	2.28						
15	0431	1.59	30	0618	1.41	15	0640	1.34	30	0755	1.14	15	0902	0.96	30	0014	2.24
SU	1050	1.98	MO	1124	1.72	TU	1116	1.57	WE	1210	1.34	FR			SA	0932	0.97
	1702	1.44		1625	1.39		1534	1.36		1523	1.27						
	2337	1.96		2342	2.23		2322	2.25		2349	2.32						
										31	0833	1.10					
										TH							

สูงของน้ำทำนายเป็นเมตรเหนือระดับน้ำลงต่ำที่สุด

HEIGHTS OF WATER PREDICTED IN METERS ABOVE THE LOWEST LOW WATER

คำนวณโดย กรมอุทกศาสตร์ กองทัพเรือ