



Course Book

Host Sponsor

Co-Sponsors



Race Schedule – Appendix 1

Maximum Number of Races per Class: 10

The first warning signal will be at 10:00 hrs on each racing day, unless the “Around the Island” Offshore Race is planned. See SI 6.7

Sunday 21st May - Practice Race

Time of first warning signal 13.00

Monday 22nd May

Time of first warning signal 10.00

Tuesday 23rd May

Time of first warning signal 10.00

Wednesday 24th May

Time of first warning signal 10.00

Thursday 25th May

Reserve Day

Friday 26th May

Time of first warning signal 10.00

Saturday 27th May

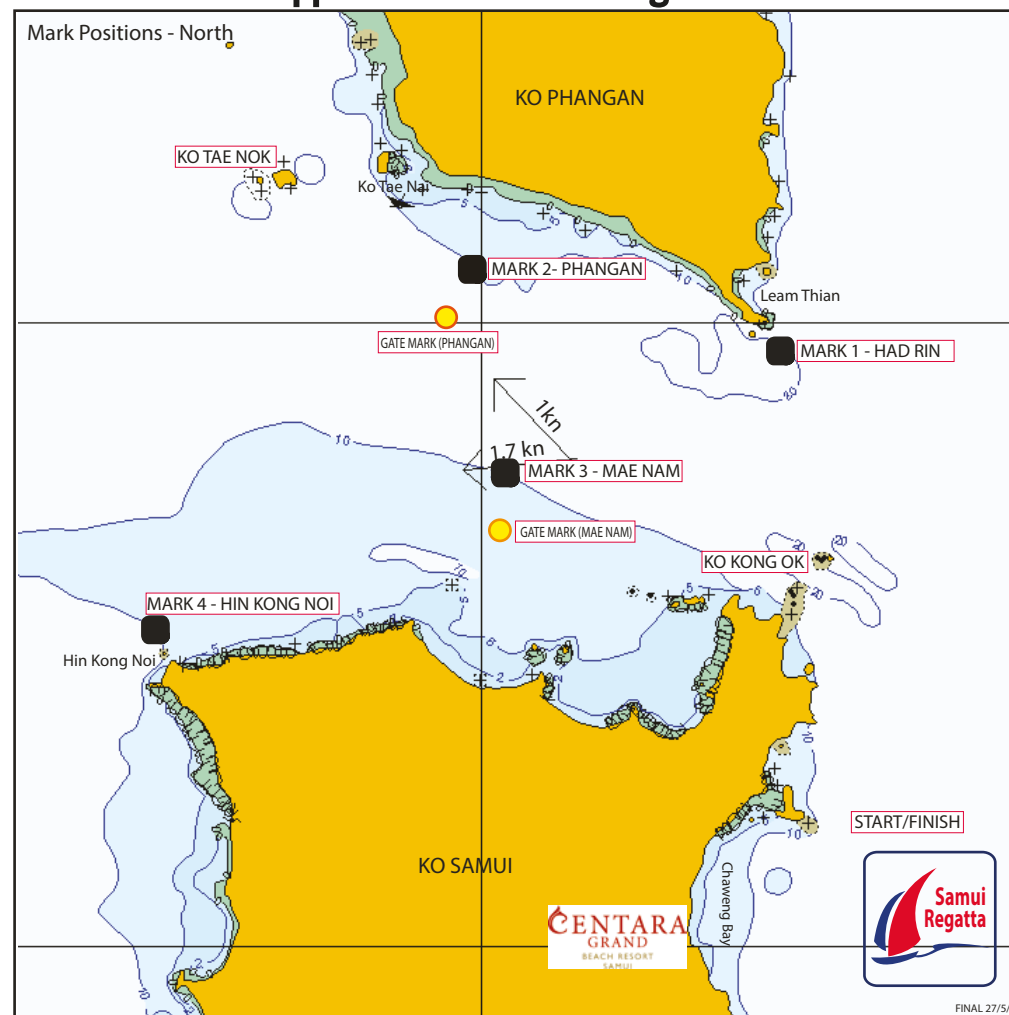
Time of first warning signal 10.00

When more than one race will be held on the same day, the warning signal for each succeeding race will be made as soon as practicable.

Organising Authorities



Appendix 2 - Course Diagrams



Coastal Courses

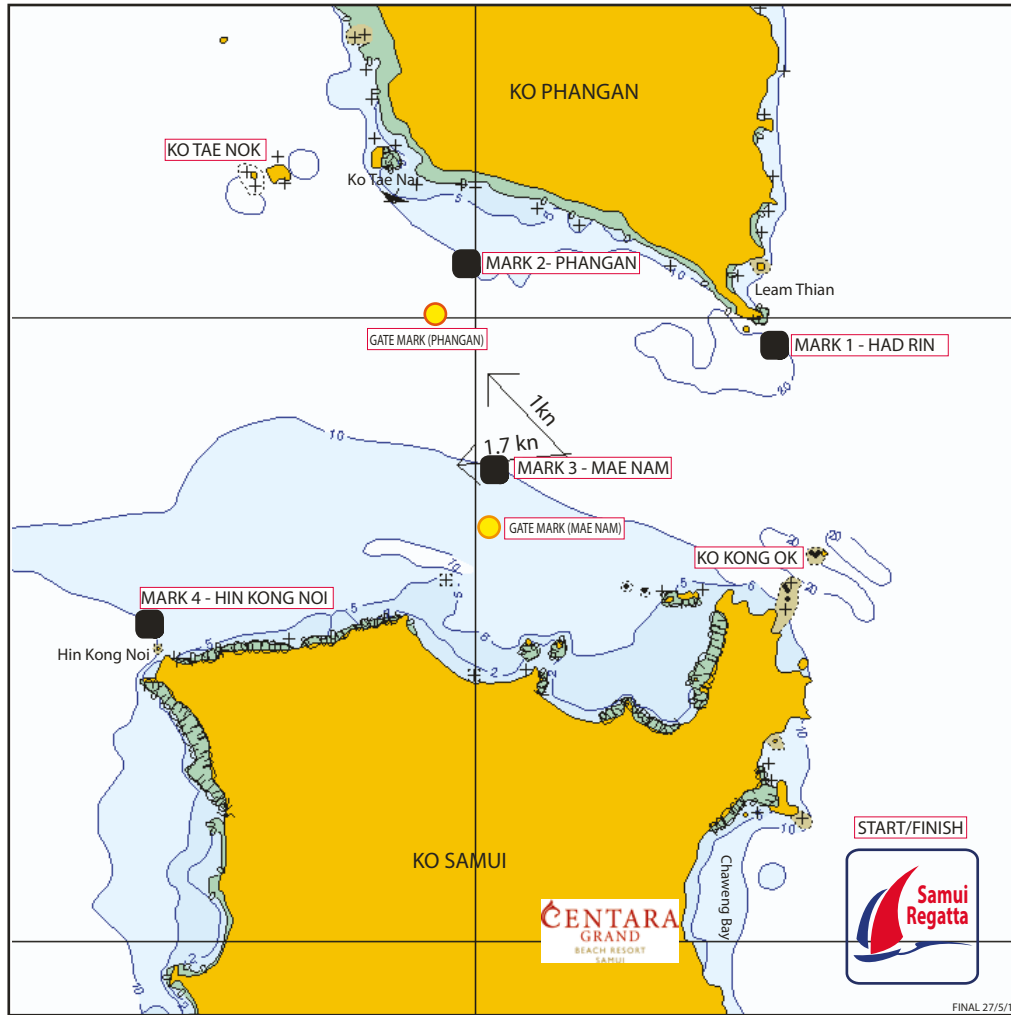
Mark Positions - North

REGATTA HQ (CENTARA GRAND BEACH RESORT)	N 9° 31.11	E100° 03.58
MARK 1 - HAD RIN	N 9° 39.28	E100° 04.83
MARK 2 - PHANGAN	N 9° 40.89	E100° 00.08
MARK 3 - MAE NAM	N 9° 37.50	E100° 00.55
MARK 4 - HIN KONG NOI	N 9° 34.94	E 99° 55.12
KO TAE NOK	N 9° 42.25	E 99° 56.45
KO KONG OK	N 9° 36.25	E100° 05.65

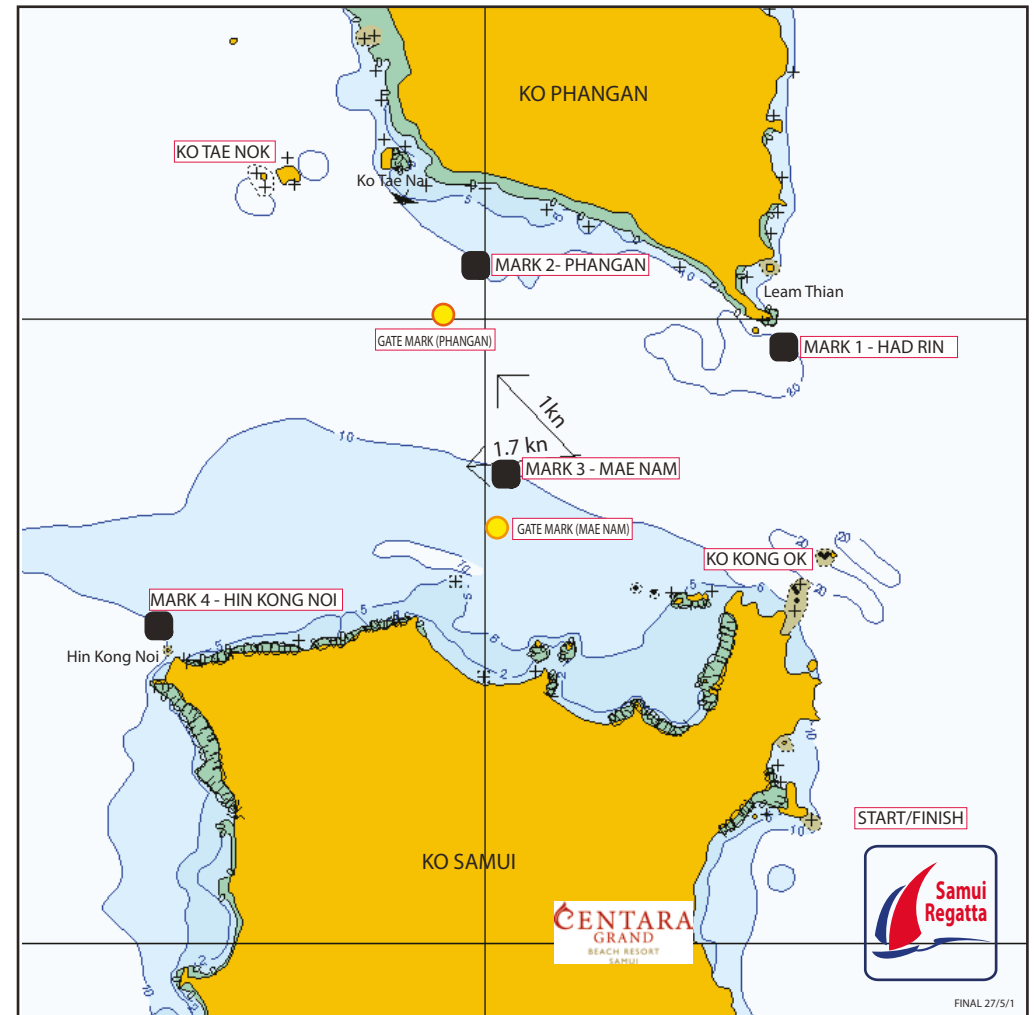
Mark positions shown in the course diagrams are for illustration only.

If there is any discrepancy between a course diagram and the written description, then the written description shall prevail.

North Courses 1,2,3



North Courses 4,5,6



Coastal Courses

COURSE 1

DISTANCE APPROX 22 NM

START
PASS **KO KONG OK** TO PORT
ROUND **MARK 1 - HAD RIN** TO PORT
ROUND **MARK 2 - PHANGAN** TO PORT
AND PASS THROUGH **GATE**
(LEAVING MARK 2 - PHANGAN TO PORT)
ROUND **KO KONG OK** TO STARBOARD
FINISH

COURSE 2

DISTANCE APPROX 32 NM

START
PASS **KO KONG OK** TO PORT
ROUND **MARK 1 - HAD RIN** TO PORT
PASS **MARK 2 - PHANGAN** TO PORT
ROUND **KO TAE NOK** TO PORT
THROUGH **GATE MARK 2 - PHANGAN**
ROUND **KO KONG OK** TO STARBOARD
FINISH

COURSE 3

DISTANCE APPROX 28 NM

START
PASS **KO KONG OK** TO PORT
ROUND **MARK 2 - PHANGAN** TO PORT,
ROUND **MARK 3 - MAE NAM** TO PORT
AND PASS THROUGH **GATE**
(LEAVING MARK 3 - MAE NAM TO PORT)
ROUND **KO KONG OK** TO STARBOARD
FINISH

Coastal Courses

COURSE 4

DISTANCE APPROX 36 NM

START
PASS **KO KONG OK** TO PORT
ROUND **MARK 2 - PHANGAN** TO PORT
ROUND **MARK 4 - HIN KONG NOI** TO PORT
THROUGH **GATE MARK 3 - MAE NAM**
ROUND **KO KONG OK** TO STARBOARD
FINISH

COURSE 5

DISTANCE APPROX 26 NM

START
PASS **KO KONG OK** TO PORT
ROUND **MARK 1 - HAD RIN** TO PORT
ROUND **MARK 3 - MAE NAM** TO PORT
AND **PASS THROUGH GATE**
(LEAVING MARK 3 - MAE NAM TO PORT)
ROUND **KO KONG OK** TO STARBOARD
FINISH

COURSE 6

DISTANCE APPROX 35 NM

START
PASS **KO KONG OK** TO PORT
ROUND **MARK 1 - HAD RIN** TO PORT
ROUND **MARK 4 - HIN KONG NOI** TO PORT
THROUGH **GATE MARK 3 - MAE NAM**
ROUND **KO KONG OK** TO STARBOARD
FINISH

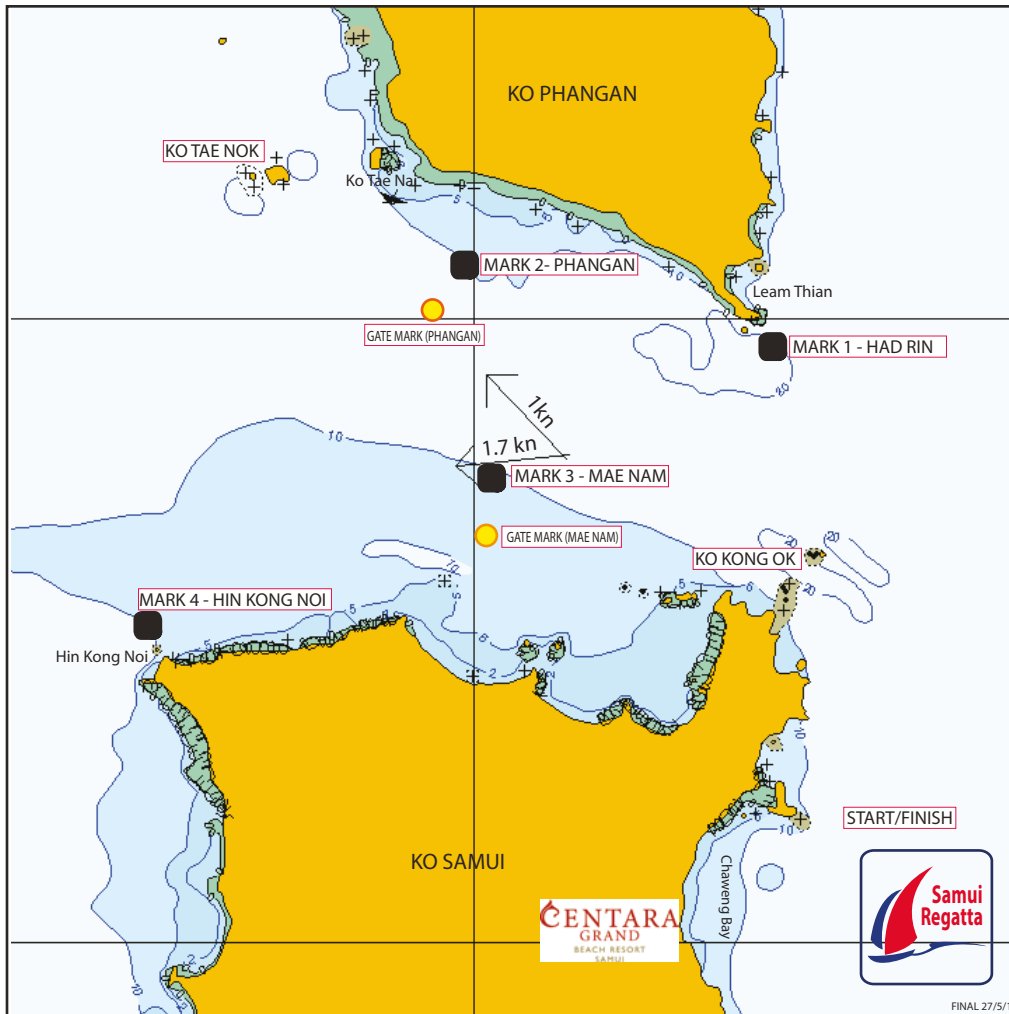
Mark positions shown in the course diagrams are for illustration only.

If there is any discrepancy between a course diagram and the written description, then the written description shall prevail.

Mark positions shown in the course diagrams are for illustration only.

If there is any discrepancy between a course diagram and the written description, then the written description shall prevail.

North Courses 7,8



Coastal Courses

COURSE 7
DISTANCE APPROX 16 NM

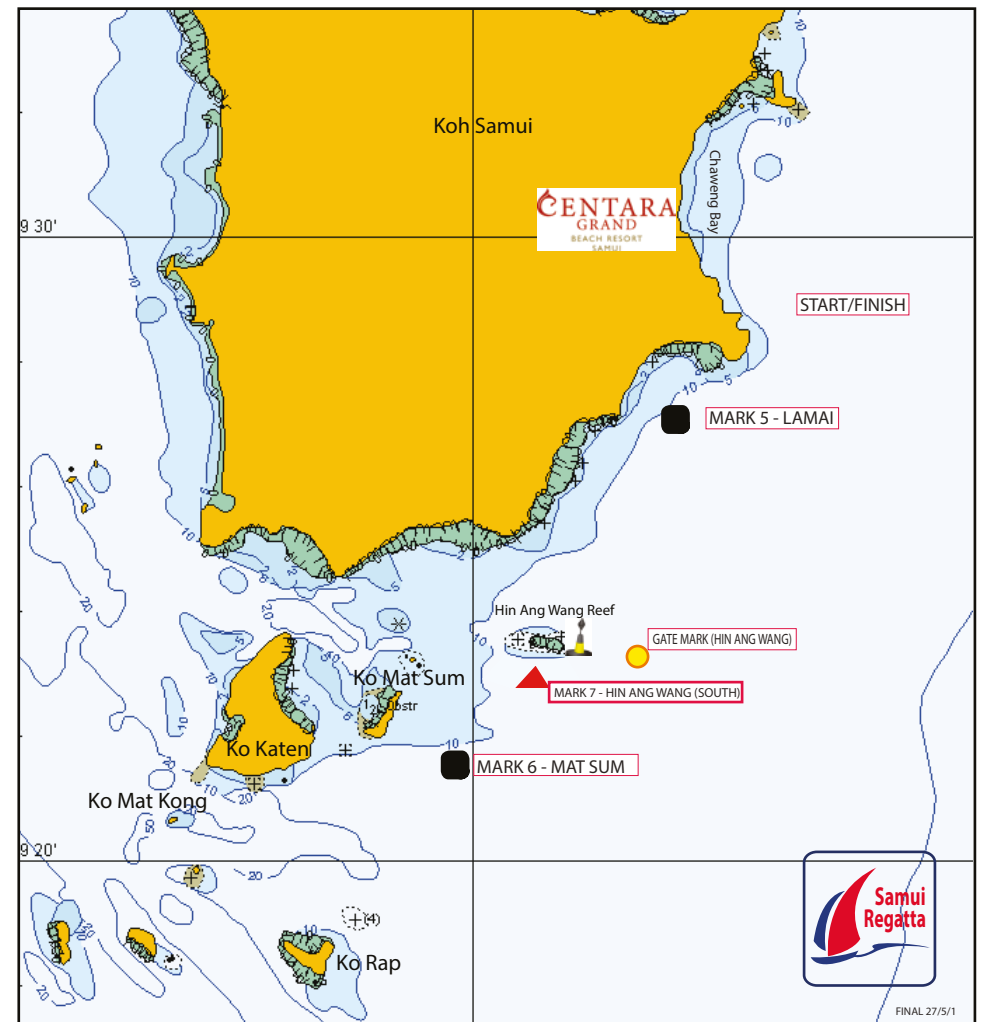
START
PASS **KO KONG OK** TO PORT
ROUND **MARK 3 - MAE NAM** TO PORT
AND **PASS THROUGH GATE**
(LEAVING MARK 3 - MAE NAM TO PORT)
ROUND **KO KONG OK** TO STARBOARD
FINISH

COURSE 8
DISTANCE APPROX 17 NM

START
PASS **KO KONG OK** TO PORT
ROUND **MARK 1 - HAD RIN** TO PORT
PASS **KO KONG OK** TO STARBOARD
FINISH

Mark positions shown in the course diagrams are for illustration only.
If there is any discrepancy between a course diagram and the written description, then the written description shall prevail.

South Courses 9, 10, 11



Coastal Courses

COURSE 9
DISTANCE APPROX 22 NM

START
ROUND **MARK 5 - LAMAI** TO PORT
PASS **HIN ANG WANG REEF** TO PORT
ROUND **MARK 6 - MAT SUM** TO PORT
THROUGH **GATE HIN ANG WANG**
(Gate is between yellow/black
Cardinal Mark and Buoy)
FINISH

COURSE 10
DISTANCE APPROX 30 NM

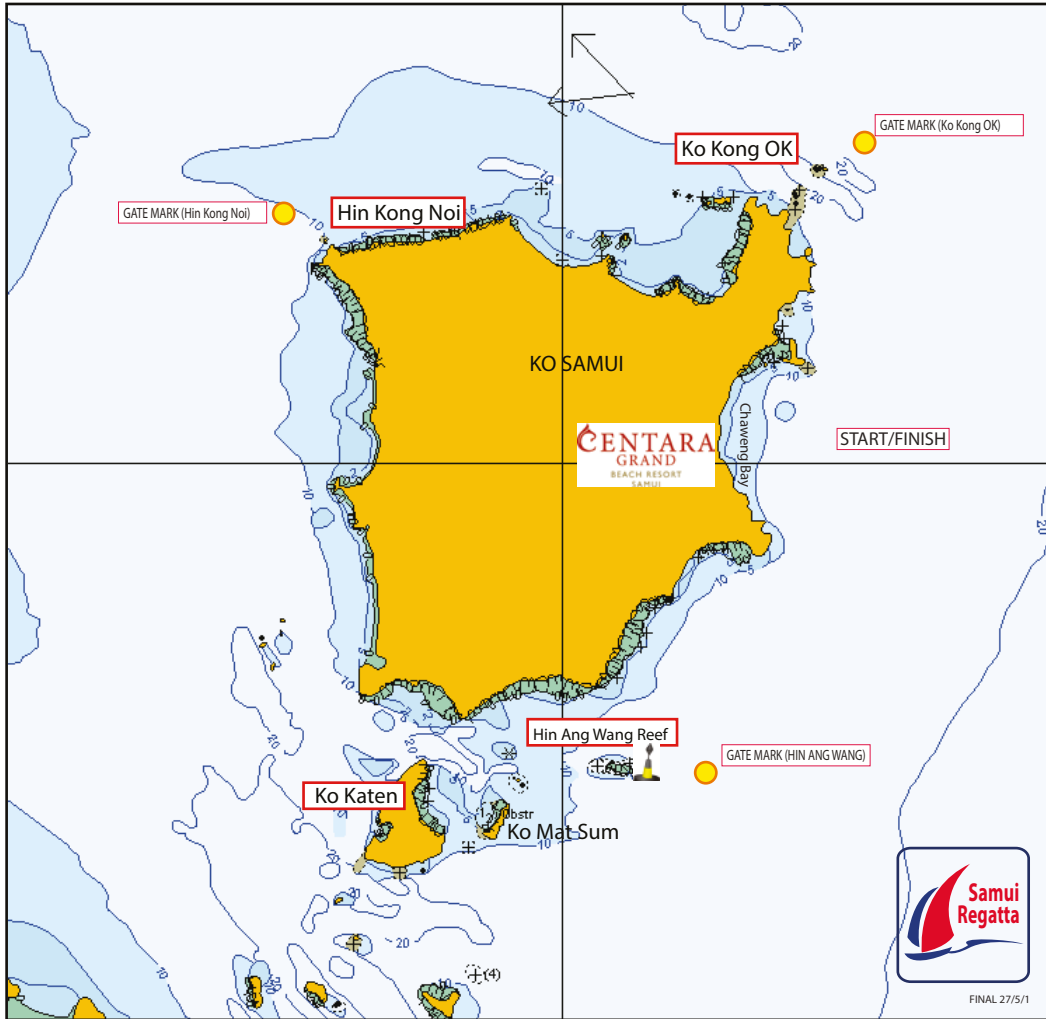
START
ROUND **MARK 5 - LAMAI** TO PORT
PASS **HIN ANG WANG REEF** TO PORT
PASS **MARK 6 - MAT SUM** TO PORT
ROUND **KO RAP** TO PORT
THROUGH **GATE HIN ANG WANG**
(Gate is between yellow/black
Cardinal Mark and Buoy)
FINISH

COURSE 11
DISTANCE APPROX 18 NM

START
ROUND **MARK 5 - LAMAI** TO PORT
PASS **HIN ANG WANG REEF** TO PORT
ROUND **MARK 7 - HIN ANG WANG (SOUTH)** TO PORT
PASS THROUGH **GATE HIN ANG WANG**
(Gate is between yellow/black
Cardinal Mark and Buoy)
FINISH

Mark positions shown in the course diagrams are for illustration only.
If there is any discrepancy between a course diagram and the written description, then the written description shall prevail.

"Round the Island" Courses 12, 12B, 14, 14B

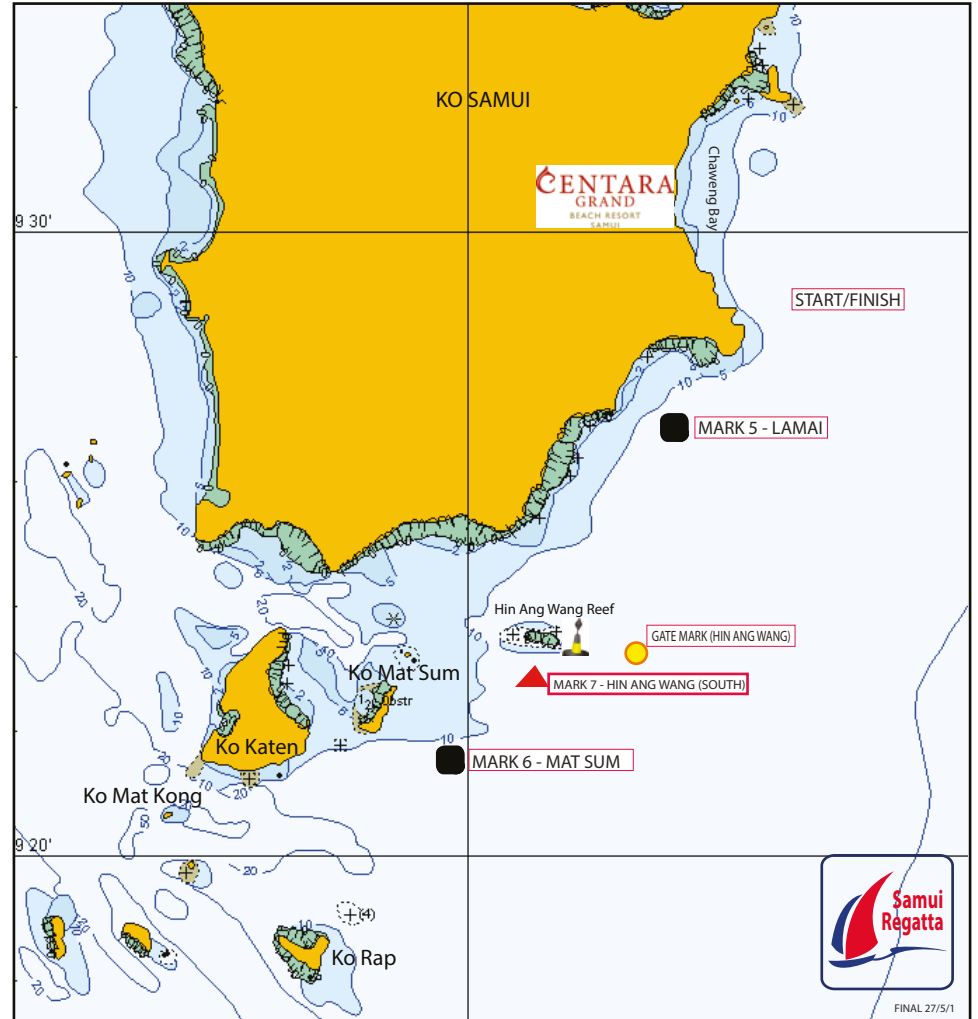


Offshore Courses - "Around the Island"

COURSE 12 DISTANCE APPROX 40 NM	COURSE 12B DISTANCE APPROX 40 NM	COURSE 14 DISTANCE APPROX 48 NM	COURSE 14 B DISTANCE APPROX 48 NM
START PASS HIN ANG WANG REEF TO PORT PASS KO KATEN TO PORT THROUGH GATE HIN KONG NOI (Gate is between HIN KONG NOI and Buoy) THROUGH GATE KO KONG OK (Gate is between KO KONG OK and Buoy) FINISH	START PASS KO KONG OK TO PORT THROUGH GATE HIN KONG NOI (Gate is between HIN KONG NOI and Buoy) PASS KO KATEN TO STARBOARD THROUGH GATE HIN ANG WANG (Gate is between yellow/black Cardinal Mark and Buoy) FINISH	START THROUGH GATE HIN ANG WANG (Gate is between yellow/black Cardinal Mark and Buoy) PASS KO KATEN TO STARBOARD THROUGH GATE HIN KONG NOI (Gate is between HIN KONG NOI and Buoy) THROUGH GATE KO KONG OK (Gate is between KO KONG OK and Buoy) FINISH	START PASS KO KONG OK TO PORT THROUGH GATE HIN KONG NOI (Gate is between HIN KONG NOI and Buoy) PASS KO KATEN TO PORT THROUGH GATE HIN ANG WANG (Gate is between yellow/black Cardinal Mark and Buoy) FINISH

Mark positions shown in the course diagrams are for illustration only.
If there is any discrepancy between a course diagram and the written description, then the written description shall prevail.

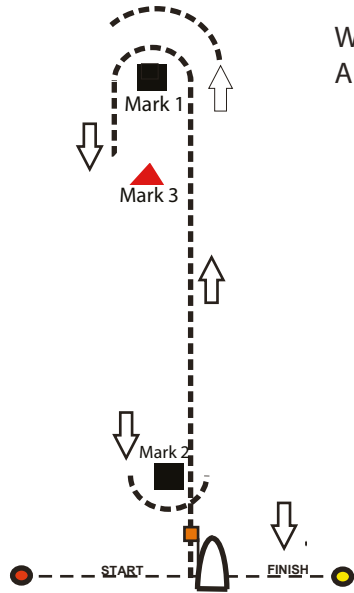
South Course Mark Positions



Coastal Courses
Mark Positions - South

MARK 5 - LAMAI	N9° 26.68	E 100° 03.47
HIN ANG WANG REEF	REEF EXTENDS at N9° 23.57 between E 100° 00.50 and E 100° 01.80 YACHTS SHALL NOT PASS BETWEEN HIN ANG WANG REEF AND THE EAST CARDINAL MARK	
HIN ANG WANG (Cardinal Mark)	N9° 23.44	E 100° 02.18
MARK 6 - MAT SUM	N9° 21.50	E 99° 59.40
MARK 7 - HIN ANG WANG (SOUTH)	N9° 23.00	E 100° 01.20

Mark positions shown in the course diagrams are for illustration only.
If there is any discrepancy between a course diagram and the written description, then the written description shall prevail.

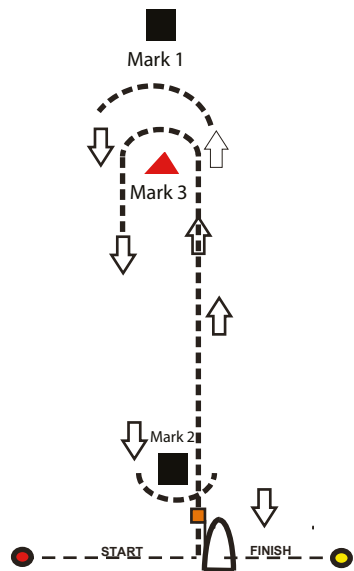


Windward/Leeward Courses
ALL MARK ROUNDINGS TO PORT

COURSE 15
START - 1 - Finish

COURSE 16
START - 1 - 2 - 1 - FINISH

COURSE 17
START - 1 - 2 - 1 - 2 - 1 - FINISH



COURSE 18
START - 3 - Finish

COURSE 19
START - 3 - 2 - 3 - FINISH

COURSE 20
START - 3 - 2 - 3 - 2 - 3 - FINISH

Mark positions shown in the course diagrams are for illustration only.
If there is any discrepancy between a course diagram and the written description, then the written description shall prevail.

Trapezoid Course

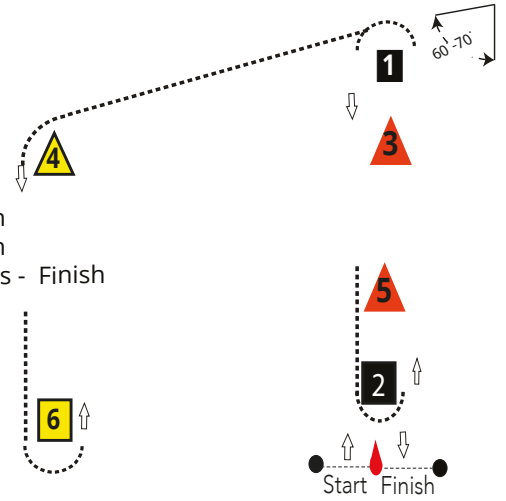
Direction of rounding:
p - Round to Port
s - Round to Starboard

Course: Inner Trapezoid

- I1 Start - 1p - 2p - 1p - 4p - 6p - 5s - Finish
- I2 Start - 3p - 2p - 3p - 4p - 6p - 5s - Finish
- I3 Start - 1p - 2p - 1p - 2p - 1p - 4p - 6p - 5s - Finish

Course: Outer Trapezoid

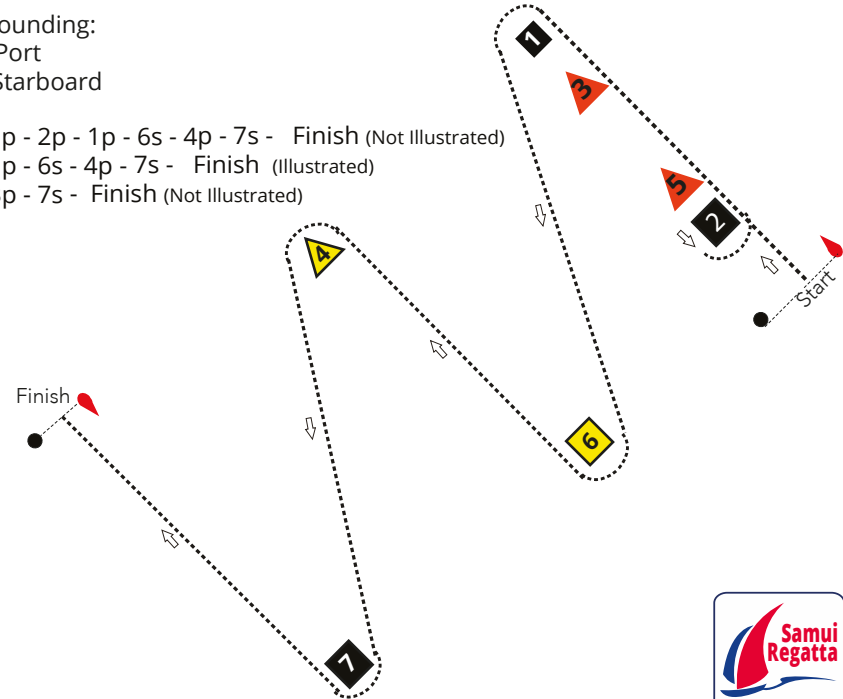
- O1 Start - 1p - 4p - 6p - 5s - Finish
- O2 Start - 3p - 4p - 6p - 5s - Finish
- O2 Start - 1p - 4p - 6p - 4p - 6p - 5s - Finish



ZigZag Courses

Direction of rounding:
p - Round to Port
s - Round to Starboard

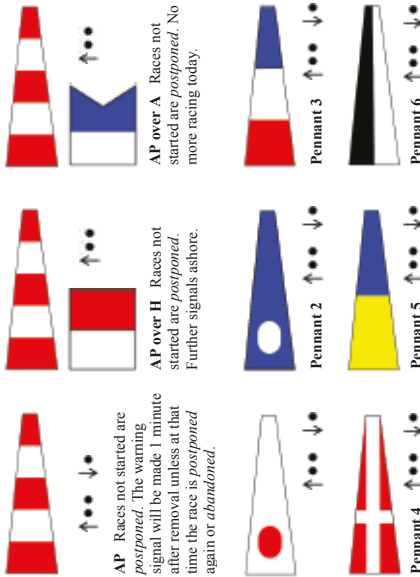
- Z1 Start - 1p - 2p - 1p - 6s - 4p - 7s - Finish (Not Illustrated)
- Z2 Start - 1p - 6s - 4p - 7s - Finish (Illustrated)
- Z3 Start - 3p - 7s - Finish (Not Illustrated)



RACE SIGNALS

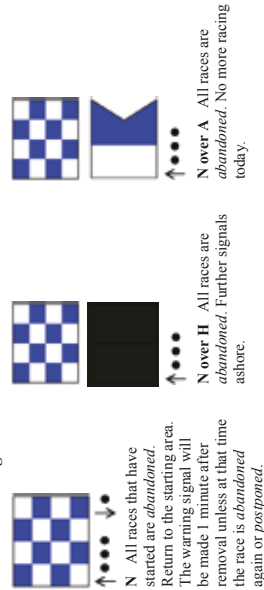
The meanings of visual and sound signals are stated below. An arrow pointing up or down (↑ ↓) means that a visual signal is displayed or removed. A dot (•) means a sound; five short dashes (-----) mean repetitive sounds; a long dash (—) means a long sound. When a visual signal is displayed over a class flag, the signal applies only to that class.

Postponement Signals



AP over a numeral pennant 1–6 Postponement of 1–6 hours from the scheduled starting time.

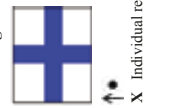
Abandonment Signals



Preparatory Signals



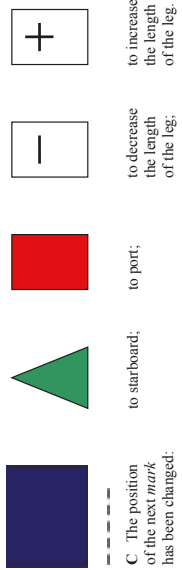
Recall Signals



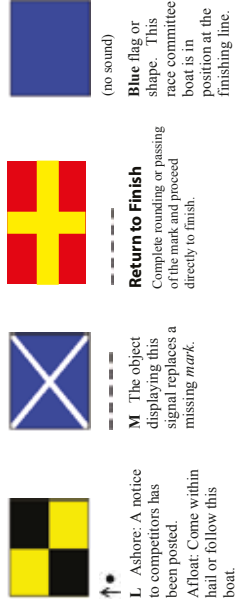
Shortened Course



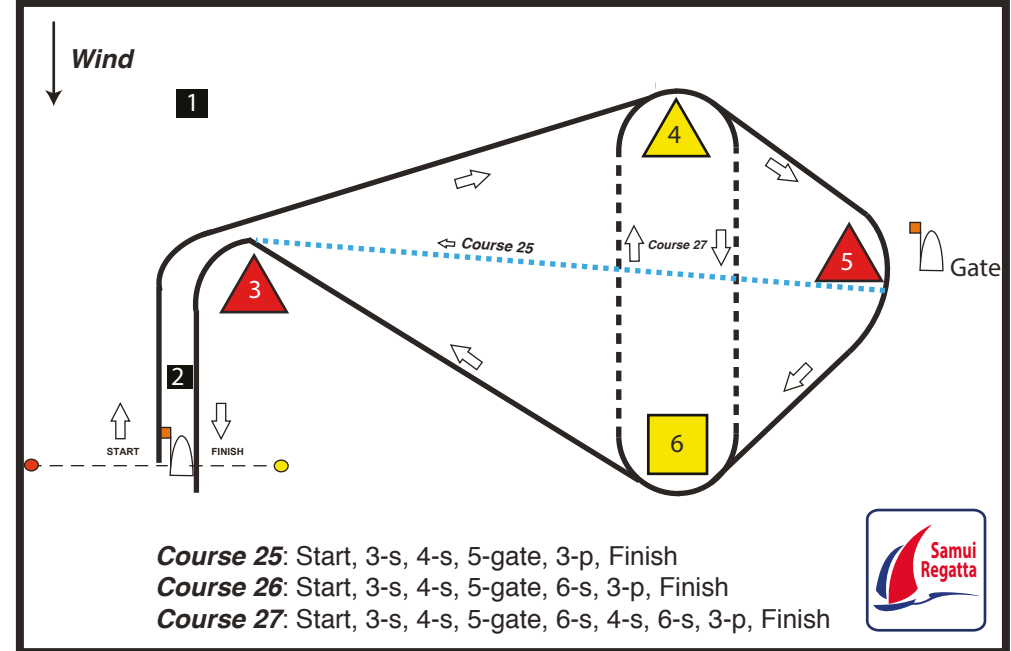
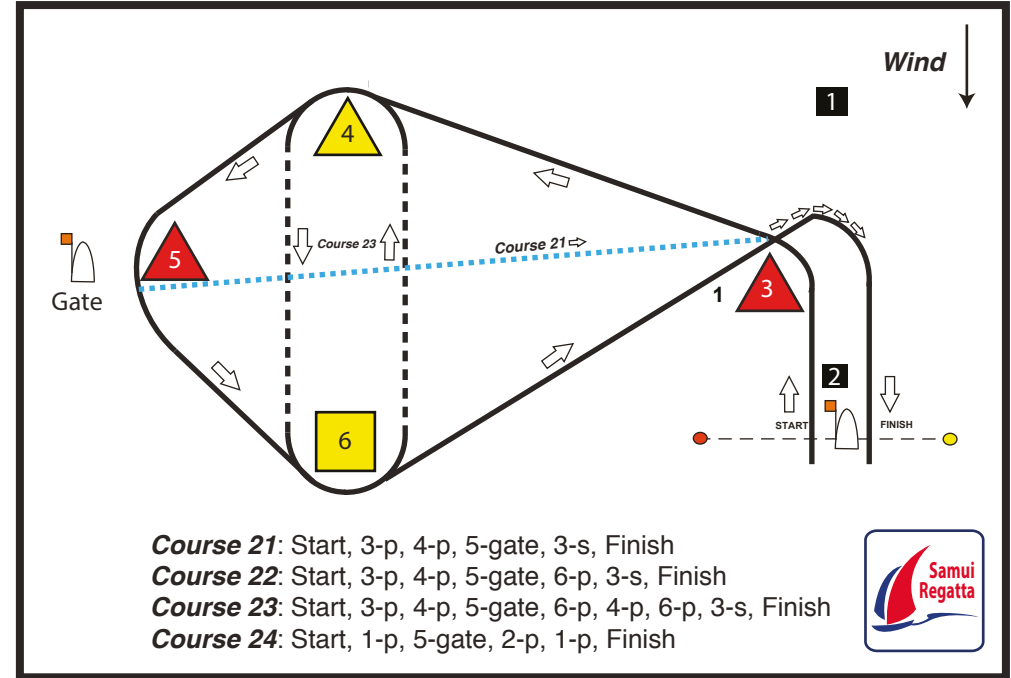
Changing the Next Leg



Other Signals



Coastal Courses 21 - 27

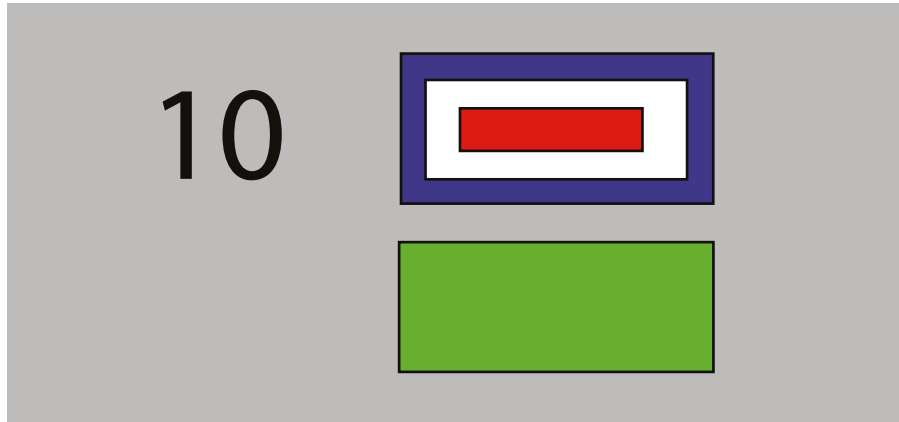


Mark positions shown in the course diagrams are for illustration only.
 If there is any discrepancy between a course diagram and the written description, then the written description shall prevail.



Adding a windward mark

If Flag W is displayed with the course number board, A new first mark will be added to the course. This will be a mark to windward of the starting line.



The Rounding direction is indicated by the Coloured Board displayed below the W. If a RED flag is displayed below flag W, then the mark is rounded to PORT. If a GREEN flag is displayed below flag W, then the mark is rounded to STARBOARD.

The second mark of the course will be the first mark in the course description. If a W flag is not flown, the first mark of the course will be the one listed in the course description. This section does not apply to windward/leeward courses. Those courses will be sailed as described in the Course Descriptions.

Return to Finish (Code Flag R)

A committee vessel, at a mark displaying a YELLOW Cross on a RED Background means complete the rounding or passing of the mark and the race direct to the finish line.



— Host Sponsor —

CENTARA GRAND
BEACH RESORT SAMUI

— Co-Sponsors —

amazing THAILAND

Amari
KOH SAMUI

OZO
Chaweng Samui

MOUNT GAY
Barbados Rum
Est. 1703

CHAWENG COVE
BEACH RESORT

SERENITY YACHTING

Chang
เครื่องดื่มชั้นนำ
OF THE ISLAND OF THAILAND

Mekhong
OF THE ISLAND OF THAILAND

100 PLUS

— Supporting Sponsors —

— Media Partners —

facebook.com/samuiregatta

WWW.SAMUIREGATTA.COM

Regatta Asia™, Samui Regatta™ and The Bay Regatta™ are registered trademarks of Phuket and Move Co., Ltd pending trademark applications. Registered in Thailand.



See you next year...
26th May - 2nd June 2018



Five days of professionally run, international yacht racing around the tropical island of Koh Samui, combined with the rights of beachside presentations and a stunning Gala Dinner at Centara Grand Beach Resort.

17th Koh Samui
REGATTA
 26th May - 2nd June 2018
 Chaweng Beach, Koh Samui, Thailand

[facebook.com/samuiregatta](https://www.facebook.com/samuiregatta)
www.samuiregatta.com

[facebook.com/bayregatta](https://www.facebook.com/bayregatta)
www.bayregatta.com
 email: thebayregatta@regattas.asia



Join Thailand's "Fun" Regatta with 4-day racing, visiting 4-stunning desitinations.
 All types of boats welcome, unique race courses,
 fantastic parties and daily prize giving.



The Bay Regatta 2018

31st Jan - 4th February
 Phuket • Phang Nga • Krabi

เกาะสมุย (สุราษฎร์ธานี)
 Ko Samui (Surat Thani)

แลต (Lat) 09° 28' 47" น.(N)

ลอง (Long) 99° 55' 40" อ.(E)

พ.ศ.๒๕๖๐

YEAR 2017

เมษายน APRIL				พฤษภาคม MAY				มิถุนายน JUNE									
เวลา	สูง (ม.)	เวลา	สูง (ม.)	เวลา	สูง (ม.)	เวลา	สูง (ม.)	เวลา	สูง (ม.)	เวลา	สูง (ม.)	เวลา	สูง (ม.)				
TIME	HT (M.)	TIME	HT (M.)	TIME	HT (M.)	TIME	HT (M.)	TIME	HT (M.)	TIME	HT (M.)	TIME	HT (M.)				
1 SA	0142 0905 1402 1849	2.32 1.40 1.69 1.39	16 SU	0145 0941 1415 1814	2.33 1.36 1.54 1.41	1 MO	0159 1054 1454 1755	2.51 1.21 1.33 1.28	16 TU	0151 1015	2.33 1.21	1 TH	0305 1136	2.28 1.14	16 FR	0239 1104	2.18 1.10
2 SU	0220 1010 1427 1906	2.40 1.40 1.56 1.35	17 MO	0216 1019 1442 1818	2.33 1.37 1.48 1.39	2 TU	0239 1204	2.48 1.24	17 WE	0222 1050	2.31 1.22	2 FR	0340 1147	2.14 1.15	17 SA	0307 1130	2.09 1.12
3 MO	0300 1912	2.43 1.32	18 TU	0246 1106 1453 1823	2.31 1.38 1.43 1.38	3 WE	0320 1306	2.40 1.26	18 TH	0253 1135	2.26 1.23	3 SA	0415 1217	1.98 1.16	18 SU	0336 1149	1.96 1.15
4 TU	0344 1911	2.41 1.32	19 WE	0318 1743	2.28 1.37	4 TH	0401 1338	2.28 1.28	19 FR	0325 1230	2.19 1.24	4 SU	0449 1251 2048	1.80 1.17 1.79	19 MO	0404 1205 2007	1.80 1.18 1.65
5 WE	0431 1816	2.35 1.33	20 TH	0355 1549	2.23 1.36	5 FR	0447 1352	2.15 1.30	20 SA	0401 1323	2.10 1.26	5 MO	1322 2123	1.19 1.92	20 TU	1225 2035	1.19 1.82
6 TH	0528 1730	2.26 1.36	21 FR	0442 1537	2.16 1.34	6 SA	0545 1415	2.00 1.30	21 SU	0449 1356	1.97 1.28	6 TU	1345 2153	1.22 2.04	21 WE	1245 2115	1.19 1.99
7 FR	0648 1623	2.16 1.38	22 SA	0551 1550	2.08 1.34	7 SU	0710 1444 2201	1.86 1.30 1.87	22 MO	0615 1416 2146	1.81 1.31 1.78	7 WE	0635 0941 1401 2203	1.30 1.36 1.24 2.13	22 TH	1259 2200	1.17 2.14
8 SA	0832 1622 2249	2.10 1.38 1.71	23 SU	0732 1604	2.01 1.36	8 MO	0348 0847 1511 2227	1.61 1.75 1.32 2.00	23 TU	0343 0809 1426 2157	1.59 1.67 1.34 1.94	8 TH	0711 1057 1420 2254	1.19 1.30 1.24 2.19	23 FR	0728 2245	1.08 2.27
9 SU	0244 0941 1634 2306	1.64 2.06 1.39 1.84	24 MO	0910 1615 2250	1.96 1.40 1.84	9 TU	0531 1001 1532 2251	1.49 1.67 1.34 2.12	24 WE	0522 0951 1433 2225	1.43 1.56 1.34 2.11	9 FR	0744 2326	1.13 2.23	24 SA	0815 2331	0.98 2.36
10 MO	0413 1033 1653 2329	1.58 2.00 1.41 1.96	25 TU	0416 1018 1620 2302	1.57 1.90 1.44 1.98	10 WE	0637 1059 1546 2318	1.38 1.60 1.37 2.20	25 TH	0633 1059 1447 2300	1.28 1.46 1.31 2.27	10 SA	0815 2359	1.09 2.26	25 SU	0904	0.93
11 TU	0517 1119 1710 2353	1.51 1.94 1.43 2.07	26 WE	0530 1113 1620 2329	1.46 1.82 1.45 2.15	11 TH	0721 1147 1559 2346	1.30 1.53 1.37 2.27	26 FR	0732 1154 1508 2340	1.16 1.36 1.26 2.39	11 SU	0848	1.08	26 MO	0016 0948	2.40 0.92
12 WE	0622 1200 1721	1.46 1.86 1.45	27 TH	0648 1200 1629	1.36 1.72 1.43	12 FR	0800 1230 1616	1.24 1.47 1.37	27 SA	0828 1245 1534	1.09 1.27 1.21	12 MO	0031 0923	2.27 1.07	27 TU	0100 1023	2.40 0.94
13 TH	0018 0725 1238 1732	2.17 1.41 1.77 1.46	28 FR	0002 0758 1246 1649	2.30 1.28 1.60 1.39	13 SA	0016 0836 1309 1633	2.31 1.21 1.42 1.36	28 SU	0022 0924	2.47 1.05	13 TU	0105 0953	2.28 1.08	28 WE	0141 1047	2.35 0.98
14 FR	0046 0818 1313 1749	2.24 1.38 1.69 1.45	29 SA	0039 0857 1330 1714	2.41 1.23 1.48 1.34	14 SU	0047 0912 1346 1647	2.34 1.20 1.39 1.34	29 MO	0105 1019	2.49 1.05	14 WE	0138 1016	2.27 1.08	29 TH	0218 1044 1628 1848	2.25 1.02 1.30 1.25
15 SA	0115 0901 1345 1807	2.29 1.36 1.61 1.43	30 SU	0118 0953 1412 1737	2.49 1.21 1.39 1.30	15 MO	0119 0944	2.35 1.20	30 TU	0147 1108	2.47 1.07	15 TH	0210 1039	2.24 1.09	30 FR	0250 1037 1715 1949	2.12 1.03 1.42 1.36
									31 WE	0228 1142	2.39 1.10						

สูงของน้ำทำนายเป็นเมตรเหนือระดับน้ำลดต่ำที่สุด

HEIGHTS OF WATER PREDICTED IN METERS ABOVE THE LOWEST LOW WATER

คำนวณโดย กรมอุทกศาสตร์ กองทัพเรือ